

SATURDAY • DECEMBER 1
COLE HARDWARE'S
NEIGHBORHOOD
HOLIDAY PARTY
 MAKING SPIRITS BRIGHT
see page 6 for details

NEW!
Repair Referral
Self-Service
Portal
see page 3 for details

COUPON
 One tin **FREE**
 with a purchase of \$20 or more
 of regularly priced merchandise.
Chocolate Drops Tin
 (Sku 927600) Reg. \$4.99 Limit 1. Valid with coupon only.
 Coupon valid Nov. 1–Dec. 31, 2018, while supplies last.

Cole Hardware's Hardware Hotline

Holiday 2018 (November & December)
 NEWS AND VIEWS FROM AROUND THE STORES

Dave and the Freshly Cut Christmas Tree

Many of our longtime Cole Valley shoppers fondly recall Dave Karp personally delivering their first Christmas tree when they moved to the neighborhood. Back in the 1960s, Dave brought in Christmas trees to our flagship store because a customer requested one. Dave found a family-owned tree source, and we worked with them for over 50 years until their tree business was sold.

While we practice Dave's philosophy of friendly customer service on a daily basis, during the holidays we warmly remember his childlike excitement when our first batch of Christmas trees would arrive—an excitement that didn't subside until Christmas Eve. Each morning, Dave would call the stores, anxious to hear how many trees were sold the day before. Over the years, Dave's love for holiday trees brought a lot of joy and memories to thousands and thousands of San Francisco families.

Keeping with tradition, all of our stores will once again stock freshly cut Christmas trees in a variety of

sizes. Trees will arrive the week of Thanksgiving, as usual. All Cole Hardware locations also have tree stands, lights, ornaments, and more—everything you need to create a festive holiday tree! We're happy to bring the tree to your home in San Francisco and the Rockridge neighborhood on the weekend for a \$20 delivery fee. Just make arrangements for delivery at the time of purchase. While we will try our best to deliver your tree exactly when you request, please allow for a two-hour delivery window.



SATURDAY & SUNDAY
NOVEMBER 3-4
BAG
SALE
 • SPECIAL DISCOUNT •
20% OFF!

We're excited to announce that our annual November 20% Off Bag Sale will now take place for two days! Everything that fits (or not) in one of our sturdy and stylish reusable shopping bags is 20% off—nearly everything in the store. This is a great time to get your holiday shopping started or to treat yourself. And there's still plenty of time to undertake a home improvement project before the holiday chaos is fully upon us. Come in on Saturday, and then come back on Sunday for anything you might have forgotten! Keep the reusable shopping bag as our gift to you.



Offer applies to regular-price merchandise only. Does not apply to gift cards, postage stamps, Muni passes, Clipper cards, meter cards, Nest products, special orders, recycling fees, or sale merchandise. Not valid with other coupons or offers. Rewards points do not accumulate.

Resharp™ Your Cutlery

Cooking is much more enjoyable with a sharp knife. So if your knife seems a bit dull, bring it into any of our locations to get it sharpened in about a minute with our new Resharp blade-sharpening machines. This patented system sharpens your knives right in front of you. With unprecedented speed, you get all your knives sharpened in a fraction of the time of other methods. Patented grinding technology scans the shape of your knife and then carefully restores the edge, while removing a minimal amount of material.

The Resharp system sharpens most American- and European-style knives as well as Japanese knives with a V-shaped bevel. Bring your chef, paring, slicing, chopping, santoku, pocket, hunting, and specialty knives. (We cannot sharpen serrated,



scalloped, or ceramic knives in-house.) See stores for details and pricing.

Our professional knife sharpener, Matt, will still be visiting our stores every other week for those of you who prefer the expertise of a professional. After all of the time and trouble you go through to cook your holiday turkey, don't end up butchering it with a dull knife!

resharp™
 on-demand knife sharpening

no drop-off | no pickup
 factory sharp in 60 seconds
 while you watch



"Our commitment to you: Your satisfaction guaranteed. Period."

Shop online 24/7 at ColeHardware.com.

70 Fourth Street
 San Francisco, CA 94103-3124

PRSR STD
 U.S. POSTAGE PAID
 SAN FRANCISCO, CA
 PERMIT #3137

**TIME-SENSITIVE
 MATERIAL**



Scan to view
 our website.



We Speak Holiday: Family Traditions

At Cole Hardware, we appreciate the diversity of our crew members, and we asked them to share some of their holiday traditions through the *Hardware Hotline*. We must warn you: don't read this on an empty stomach because, as you will see, the recurring theme is food! Sharing food with family and friends is something all cultures have in common.

Chloe, Buyer

My aunt Sandra took over the family tradition from my grandmother of making Norwegian treats (as well as some nontraditional goodies) to send every year for the holidays. She makes batches to send to my sister in New York, my parents in Wisconsin, and now to me in California! Included are *krumkake*, *lefse*, butter cookies, *sandbakkel*, brittle, and more.



Tina, North Beach Manager

Our family of Italian descent always celebrated on Christmas Eve with a dinner of fried haddock as our main entrée, with a side of broccoli and garlic over spaghetti.

Marina, Accounting Office

In Rio de Janeiro, we celebrate with a big dinner on Christmas Eve with all of our extended family. We exchange gifts, and our turkey dinner is somewhat similar to the American Thanksgiving.

Irma, Human Resources

Christmas for us was never about gift exchanges or receiving gifts. Our Christmas Eve tradition was to go to church for a midnight mass celebration and then share food with family and friends. Tamales, hot chocolate, *pan dulce*, hot cider (*ponche*), mole, and colorful piñatas filled with candy made Christmas a wonderful celebration. These days, it is a bit difficult to keep this tradition alive; however, my family and I still go to church every Christmas Eve and make traditional Abuelita chocolate, ponche, and mole for Christmas dinner. To the kids' disappointment, unfortunately, we don't have a place to safely crack a piñata!



Ellen, Rockridge

My family is from the Bay Area, and the holiday season is crab season for us. The eve of each holiday, both Thanksgiving and Christmas, is dedicated to cracked crab, garlic bread, and potato soup. Just add some champagne!

William, North Beach

When I was younger, my Chinese family always feasted on a turkey dinner on Christmas Day. We also celebrated Boxing Day on December 26 by exchanging gifts.



oplatek, a wafer bread, with one another. We abstain from meat and enjoy fish as the main course. My uncle Mike makes a savory potato soup, my brother Rich and sister Marty are now the main pierogi makers in our family, and my mom makes her famous nut rolls.

Rene, Cole Valley

My mom always made a dish with Polish sausage and potatoes simmering together in a tomato sauce, with sauerkraut on the side. My youngest son demands we have this every Christmas Eve, which we still do. My mother was born in Breslau, Germany, but after World War II, country borders were changed, and Breslau became Wrocław, Poland.

David, Dave Karp's Grandson

The Karp's enjoy Hanukkah with our family, eating latkes and lighting the menorah.



Ellen, Rockridge

My family is from the Bay Area, and the holiday season is crab season for us. The eve of each holiday, both Thanksgiving and Christmas, is dedicated to cracked crab, garlic bread, and potato soup. Just add some champagne!

Millette, Accounting Office

Our Filipino family always spends the Christmas holiday at the home of the eldest sibling. Presents are exchanged and we enjoy traditional foods including *lechon* (ham) and a special cheese, *queso de bola*.

Coins for the Community

Thank you for your generosity! Our Coins for the Community collection in August raised \$3,482.81 for our local Children's



Miracle Network hospital, UCSF Benioff Children's Hospitals in San Francisco and Oakland. In September, we helped our friends at St. Anthony Foundation, whose mission is to feed, heal, shelter, clothe, and lift the spirits of those in need, by collecting \$3,470.60. This now brings our grand total to \$157,099.30 since our program began!



The funds we collected in October are earmarked for Bay Area Young Survivors (BAYS), which offers monthly support group meetings with free childcare, an active online network, and community-building events for young women with breast cancer in the San Francisco Bay Area. We'll report on those numbers in our next issue.



November:

For November, we will be raising funds for our friends at Groceries for Seniors and St. Paul's Pantry of Hope, two valuable organizations that distribute nutritious, fresh food to senior citizens.



December:

Our December collection will benefit Women Organized to Make Abuse Nonexistent, Inc. (W.O.M.A.N., Inc.) to support the many programs it provides to survivors of domestic violence.



It's easy to donate to Coins for the Community! Simply drop your spare change in any of our collection jars or choose the "donate" option when you're checking out at any of our registers. Or bring in that old jar of pennies that's collecting dust on your dresser.

W.O.M.A.N., Inc. Adopt-a-Family

For the past eight Christmas seasons, our former Rockridge store manager, Tessa, has participated in a holiday adopt-a-family program. She has adopted families both personally and for us at Cole Hardware. Whoever could, pitched in with presents and gift cards for these mothers and their children to make their Christmas special. Although Tessa has moved on, Cole Hardware will once again be adopting two families this holiday season. If you would like to donate a gift or gift card to one of these families, please email service@colehardware.com or ask for Mary at our Rockridge store or Julia at our North Beach store.

Our two families this year include:

Family 1: Mom and three children (4-year-old girl, 8-year-old boy, and 13-year-old girl).

Family 2: Mom and four children (3-year-old boy, 5-year-old girl, 9-year-old boy, 16-year-old girl).

Gifts and donations need to be received by December 9. Anything you can give will be greatly appreciated.



"Our commitment to you: Your satisfaction guaranteed. Period."



SAME-DAY DELIVERY!



Call (415) 200-2154

Sunday with Samantha, Color Consultant

Rockridge

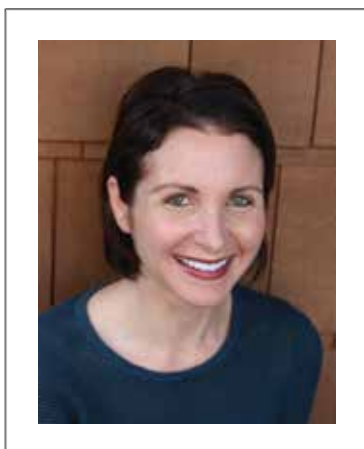
Sunday, November 18

11:30 am–1:30 pm

\$5 (reimbursed with \$5 gift card at consultation)

There's still some time to get a quick paint job done before the end of the year if you're expecting company for the holidays! Not sure of what color to paint your guest room or an accent wall? Let our color consultant, Samantha, help you choose from among the overwhelming number of colors available.

Visit colehardware.eventbrite.com to sign up for one of her 20-minute appointment slots. Bring in photos, fabric swatches, throw pillows, or anything else that will help Samantha work with you to come up with a color palette that is perfect for your home.

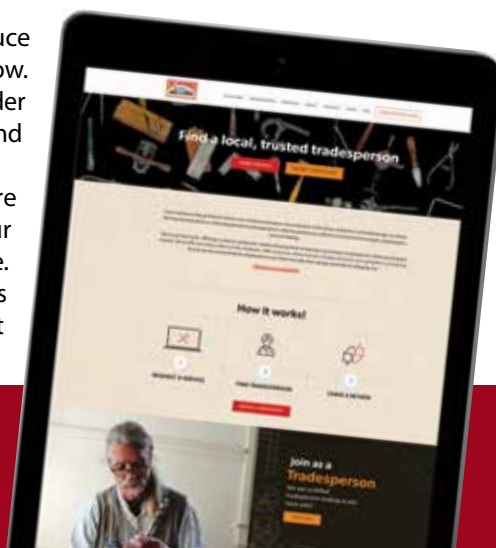


Easily Find a Local, Trusted Tradesperson!

Cole Hardware's Repair Referral Service was created to introduce our customers to the finest contractors and tradespeople we know. We have formed alliances with independent businesspeople in order to provide you with the very best in home repair, maintenance, and remodeling.

We check their work, affirming customer satisfaction, before allowing them to become a permanent tradesperson within our program. Indeed, these folks are ambassadors of Cole Hardware. With every turn of the wrench or stroke of a brush, our reputation is on the line. So you can be assured that the tradesperson you select not only does quality work but has integrity, too.

Visit our Repair Referral Self-Service Portal at
repair.colehardware.com
to find a trusted tradesperson for your project!



Mobile Locksmith Services

**24/7 Emergency Services
in San Francisco**

Residential, Commercial, and Automotive

Master Locksmith with
Over 30 Years of Experience

Residential/Commercial Services

- Rekey and Lock Changes
- Installation, Service, Repairs
 - Dead bolts and standard locks
 - Panic hardware
 - High-security locks
 - Electric strikes
 - Keyless-entry locks
 - Mailbox locks
 - Antique mortise locks
 - Safes
- Design, Customization, and Implementation
 - Master key systems
 - Access control systems
- Lock Outs (30 minute reentry in most cases)

Automotive Services

- Lock Outs
- Lock Repairs

Contact us at
(415) 760-5625 or email
homerepair@colehardware.com.



Lights for Life is dedicated to making the lives of children with cancer and their families a little easier. Over 200 million strings of lights are sold each year in the United States, with many of them eventually ending up in our landfills. Lights for Life and Cole Hardware are asking you to not throw away your old and broken lights this year. The light strands are sold to recyclers for the copper they contain. The funds received from these sales are used to provide financial assistance to the families of children with cancer, along with sponsoring a kids' camp. Cole Hardware will once again serve as a collection site. Just bring your spent light strands to any of our six locations through January 15. When replacing a spent incandescent light strand, consider upgrading to energy-efficient LED strands, which will light up your holidays for years to come and save energy at the same time.



COLE HARDWARE SUPPLIES has served property management and municipal entities for more than 25 years! Our expertise is in sourcing low-cost commercial products and hard-to-find items.

We offer FREE Bay Area delivery on most items.



345 9th Street
(415) 647-1800
colesupply@colehardware.com

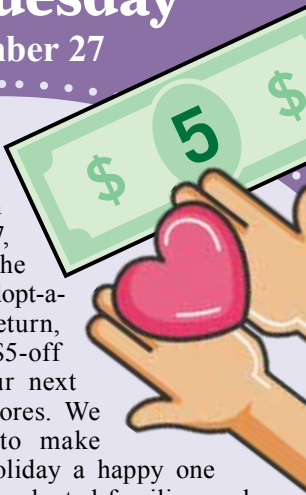


NOVEMBER EVENTS

Giving Tuesday

Tuesday, November 27

Shop with us on Tuesday, November 27, and donate \$5 to the W.O.M.A.N., Inc.'s Adopt-a-Family program. In return, we will give you a \$5-off coupon good for your next visit to any of our stores. We want to make this holiday a happy one for our adopted families, and your donation will help.



Make a Menorah

Cole Valley • Tuesday, November 6
Rockridge • Wednesday, November 7
5:30 pm–7:00 pm • \$10

To celebrate the festival of lights, children are welcome to visit one of our workshops to create a personalized menorah. We'll provide all of the supplies so that everyone goes home with their very own menorah and nine candles to get started.

Eight of the candles in the menorah represent the eight days that the Jerusalem temple's lantern remained lit after the temple was reclaimed by the Maccabees in the second century BC. The ninth candle, often elevated above the others, is the *shamash*, or helper candle, that lights the



First candle of Hanukkah this year is Sunday, December 2

other candles. Today, Hanukkah is celebrated with the lighting of candles each night for eight days. Each night, one additional candle is lit by the *shamash*, until all eight candles are lit together on the final night. Please register at colehardware.eventbrite.com to join us.

The Perfect Thanksgiving Turkey

The turkey is the centerpiece of our Thanksgiving meal. But often, the kitchen oven is jam-packed with stuffing, sweet potatoes, pumpkin pies, and other traditional holiday dishes, competing for room with the rock star of the day. Consider cooking your turkey outside this year on a Big Green Egg® or Weber® barbecue. Whichever you choose, we think

you'll be pleased with the results. Pick up a recipe for a barbecued bird at any of our stores or visit colehardware.com to download a copy.



Pumpkin and Pomegranate Place Settings

Looking for the perfect place settings for your holiday meal? Take a cue from nature and use pumpkins or pomegranates as the designator to seat your guests. Just use a simple silver or gold glitter Sharpie® marker to write family members' and friends' names. Guests then have a favor to take home, and the fruit can be used in a recipe.



Shop Locally, Please!

Plaid Friday, November 23 • Small Business Saturday, November 24

Shop locally on Plaid Friday and Small Business Saturday (and every day)! Locally owned businesses reinvest in our local economy at a 60% higher rate than chain and Internet retailers. They support other local

business professionals and retailers, too. Indeed, Cole Hardware's accountant, attorneys, benefits providers, and insurance broker are all locally owned businesses. And whether it is for store supplies or products needed

to service our customers, a large amount of our product sourcing is also from locally owned businesses.

The name "Plaid Friday" came from the idea of weaving the individual threads of small businesses together to create a strong fabric that celebrates the diversity and creativity of independent businesses. Plaid Friday was born in Oakland, a city known for strong "shop locally" campaigns, as a way to bring back the days when

shopping for friends and family during the holidays was a pleasurable, leisurely—and local—activity.

Small Business Saturday is a day dedicated to supporting small businesses across the country. This is a great opportunity to support your favorite local businesses or to try a new one—even if it's just buying a cup of coffee at a locally owned coffee shop!

Plaid Friday and Small Business Saturday are the relaxing and enjoyable alternatives to the big box stores' Black Friday events and are designed to promote local and independently owned businesses during the holidays. Shop with Cole Hardware this holiday weekend and enjoy a great deal, too!



PLAID FRIDAY & SMALL BUSINESS SATURDAY
COUPON

50% OFF
ONE REGULAR-PRICED
ITEM UNDER \$30



FOEAL4

-OR- \$15 OFF ONE
REGULAR-PRICED
ITEM OVER \$30

Valid Friday, November 23, or Saturday, November 24. Offer applies to regular-price merchandise only. Does not apply to gift cards, postage stamps, Muni passes, Clipper cards, meter cards, Nest products, special orders, recycling fees, or sale merchandise. Not valid with other coupons or offers. One redemption per household. Rewards points do not accumulate.

**PLAID
FRIDAY**

**SMALL BUSINESS
SATURDAY**

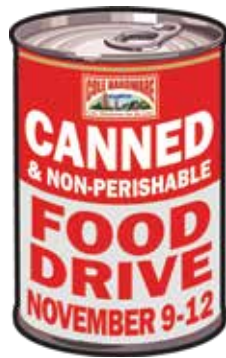
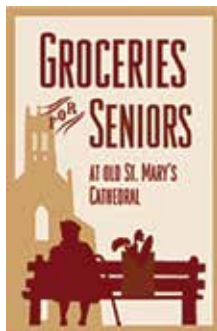
NOVEMBER EVENTS

Food Drive for Seniors

Friday, November 9–
Monday, November 12

The Bay Area is home to some of the wealthiest people on earth but also to thousands of seniors whose income level falls below the federal poverty line. These seniors live with the daily threat of hunger. Being food insecure can worsen chronic health problems that can in turn can lead to hospitalization. Food is a basic human need, and without an adequate diet, people cannot fight off disease and infection. Low-income seniors must often choose between purchasing food and buying medicine.

We will be hosting a food drive to benefit two wonderful organizations whose mission is to help feed our elderly neighbors: Groceries for Seniors in San Francisco and St. Paul's Pantry of Hope in Oakland. Please bring in any nonperishable foods during our drive if you can. Besides canned foods, we also welcome boxed foods, pastas, and cereals.



Time Change Reminder

Sunday, November 4

Clocks are moved back one hour on Sunday, November 4, at 2:00 am. If you set your clocks back on Saturday night, November 3, before you go to bed, you'll wake up Sunday morning to the correct time. While this means we gain a precious hour of sleep, it also means that it gets dark an hour earlier.

Well-lighted entryways help prevent accidents, as well as discourage would-be burglars. We have a variety of motion-sensing options, including the Light It™ wireless LED porch light, which features a floodlight-wide ultra beam. It's weatherproof, and no electricity is necessary, allowing for instant installation. (Sku 3266087, **HOT DEAL \$24.99**

Regular price \$31.99)

At the recommendation of fire departments across the country, take this opportunity to also check the batteries in your smoke and carbon monoxide detectors or install new ones.



Cole Hardware Rewards



Rewards member benefits:

- Membership is free, and you'll receive the *Hardware Hotline*, our seasonal newsletter full of valuable information and promotions.
- Free delivery in San Francisco and Rockridge neighborhood with \$100 purchase.
- New members receive an instant 5% discount on their first purchase for joining and a \$5 coupon toward their subsequent purchase of \$25.
- Lifetime warranty on most products purchased at Cole Hardware.
- Receive a birthday discount equal to 50% of your age, up to a \$100 discount.
- We don't sell our customer list, and all information is kept confidential.

How points are earned:

- Rewards points are calculated daily and shown on your receipt.
- For every dollar spent, one point is earned.
- Points are converted to dollar value on your Rewards card on the last day of each calendar quarter.
- Points are converted in \$3 increments for every 100 points earned. Points balance is then reduced, and leftover points remain in place with no expiration.
- Rewards dollars are valid for three months once converted from points.
- For us to accurately track all of your purchases, you must identify yourself as a Rewards member each time you shop.

Terms and Conditions: 1. Rewards dollars are cleared after three months if they are not used. 2. Points never expire. 3. Rewards points are not issued for charge accounts or any accounts that receive a discounted selling price under any other program. 4. In order to participate in our Rewards program, we must have your accurate address on file.

For more information, visit
colehardware.com/rewards
or email **service@colehardware.com**.

The Cole Hardware Calendar - November

SUNDAY	MONDAY	TUESDAY	WEDNESDAY	THURSDAY	FRIDAY	SATURDAY
Knife Sharpening Rockridge: Tuesdays, November 6 and 20 (drop off by 4 pm) Downtown: Wednesdays, November 7 and 21 (drop off by 8 pm on Tuesday) Russian Hill: Wednesdays, November 7 and 21 (drop off by 4 pm) North Beach: Saturdays, November 10 and 24 (drop off by 10 am) Cole Valley: Saturdays, November 10 and 24 (drop off by 3 pm) SoMa: Saturday, November 10 (drop off by noon)				1	2	3 BAG SALE 20% Off STOREWIDE see page 1 for details
4 BAG SALE 20% Off STOREWIDE see page 1 for details	5 Daylight Saving Time Ends	6 Election Day Menorah Workshop Cole Valley see page 4 for details	7 Menorah Workshop Rockridge see page 4 for details	8	9 CANNED & NON-PERISHABLE FOOD DRIVE NOVEMBER 9-12	10 November 9-12 see above for details
11 Veterans Day November 9-12 see above for details	12 CANNED & NON-PERISHABLE FOOD DRIVE NOVEMBER 9-12	13	14 Hardware HOT DEALS November 1-30 see insert	15 Hardware HOT DEALS November 1-30 see insert	16	17
18 Color Consultation Rockridge see page 3 for details	19 Cut Christmas trees arrive this week!	20 COMMUNITY SAVINGS DAYS Special Community Members SAVE 20% see our website for more details	21 COMMUNITY SAVINGS DAYS Special Community Members SAVE 20% see our website for more details	22 Thanksgiving All Stores Open 9 am-3 pm	23 PLAID FRIDAY see page 4 for coupon	24 SMALL BUSINESS SATURDAY see page 4 for coupon
25	26 Student Monday	27 Giving Tuesday see page 4 for details	28 Senior Wednesday	29 Military Thursday	30 First Responder Friday	

For your convenience, we accept:



DECEMBER EVENTS



**Saturday, December 1
11:00 am–2:00 pm**

We'll be kicking off the month of December with an open house at all Cole Hardware stores. If you're not yet in the spirit of the season, visit us, and we'll help you get there! We'll be hosting a few fun activities for the whole family, so we hope to see you.



Make an Ornament

Kids can create an ornament in their favorite colors with our bulb spinning machine.

Create a Holiday Sweater

Bring in an old sweater and turn it into something gaudy and tacky enough to win an ugly sweater contest, or so stunningly beautiful that you could wear it to your in-laws' home. We'll have tinsel, glitter, and other decor. Your friends will be in awe (or possibly just stunned).



Spirits

Enjoy a cup of hot cider or a glass of mulled wine.



Coloring Books

Get a free holiday coloring book.

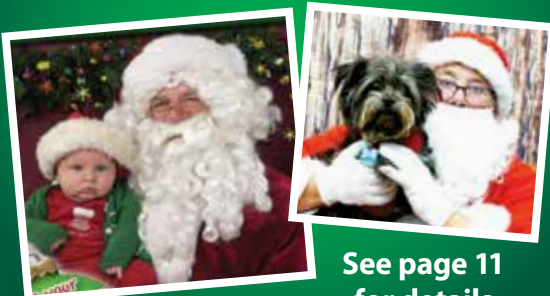


Letters to Santa

Kids can write a letter to Santa if they haven't yet done so. We'll have all the supplies.



Pictures with Santa!



**See page 11
for details**

Annual Toy Drive

**All Cole Hardware Locations
Through Thursday, December 20**

Once again, Cole Hardware's San Francisco stores are hosting a toy drive for Arriba Juntos's La Posada celebration. Arriba Juntos, which translates from Spanish to "upward together," is a nonprofit community organization that was founded in 1965 in the Mission District. It works to support thousands of individuals and families across the City who are the most underserved and at risk for prolonged poverty.

Our Rockridge store will collect new toys for the popular Toys for Tots program, which provides toys to thousands of children from low-income families.

For your donation, we suggest a gift from Green Toys™, a Bay Area company that makes a unique, fun line of classic children's toys constructed from recycled plastic containers and other environmentally friendly materials. We carry a variety of Green Toys at all of our Cole Hardware locations. We also offer a variety of classic board games including Clue®, Twister®, Candy Land®, and HiHo! Cherry-O, as well as a large selection of puzzles.

Come check them out for this special event and stock up for your own holiday gift-giving needs as well. We will be collecting new, unwrapped toys through December 20.



Gingerbread House Workshop

5:30 pm–7:00 pm • \$20

According to some historians, gingerbread (*lebkuchen*) houses were crafted by German bakers after the popular story of Hansel and Gretel was published by the Brothers Grimm. German immigrants brought the tradition to America with them, and now gingerbread houses and gingerbread men and women are synonymous with the holiday season. Children are welcome to come and create their own magical gingerbread house at our workshop. We'll provide the house, icing, and all the goodies to top it off! Register at colehardware.eventbrite.com.



**North Beach
Tuesday,
December 4**

**Rockridge
Wednesday,
December 5**



Warm Coat Drive

**All Cole Hardware Locations
Friday, December 7, Through
Monday, December 10**

The winter in San Francisco is relatively mild compared to many other parts of the country, but we do experience our share of chilly weather! Since many of us will enjoy new winter coats and accessories during our cold months, we can use this opportunity to pass on gently worn coats we no longer need. St. Anthony Foundation, North Beach Citizens, and St. Paul's Pantry for Hope, whose programs are a lifeline for those who are low income or homeless, will distribute donations. Please consider cleaning out your closet and bringing us your warm coats. Clean, gently used hats, scarves, gloves, and mittens are also welcome!



Terrarium Ornament Workshops

5:00 pm and 6:00 pm • \$10

Come create a living holiday ornament for your tree or a gift for a colleague or friend at our terrarium workshop. We'll be planting a succulent in a hanging ornament, and the \$10 fee will cover the cost of the ornament, the plant, the soil, and all supplies. Enjoy the evening out with a friend or a date. Our Cutting Edge Wine will be flowing, too! Sign up at colehardware.eventbrite.com.



**Cole Valley
Tuesday,
December 11**

**Russian Hill
Wednesday,
December 12**

DECEMBER EVENTS

Christmas Wreath Workshops

5:30 pm–7:00 pm • \$15

Christmas decorations are part of the magic of the holiday season! All Cole Hardware locations will be offering wreath workshops again this year, so you can create your own Christmas wreath. We will provide the wreath form as well as fresh fir branches. Enjoy a glass of wine while you get creative and get in the holiday spirit. Our stores offer a wide variety of ornaments, including battery-operated lights, that can be purchased to customize your wreath, or you can bring anything you wish to use from home. Children accompanied by parents are welcome, too! Please sign up at colehardware.eventbrite.com.

Cole Valley
Thursday, December 6
Thursday, December 13

Rockridge
Tuesday, December 11
Wednesday, December 19

Downtown
Tuesday
December 11

SoMa
Wednesday
December 12

Private Holiday Workshops

Interested in hosting a team-building workshop for your office? Let us know. We can lead wreath, terrarium, and candle making workshops in your space. Email julia@colehardware.com for available dates and further information.

The Cole Hardware Calendar - December

SUNDAY	MONDAY	TUESDAY	WEDNESDAY	THURSDAY	FRIDAY	SATURDAY
Knife Sharpening Rockridge: Tuesday, December 4 and 18 (drop off by 4 pm) Downtown: Wednesdays, December 5 and 19 (drop off by 8 pm on Tuesday) Russian Hill: Wednesdays, December 5 and 19 (drop off by 4 pm) North Beach: Saturdays, December 8 and 22 (drop off by 10 am) Cole Valley: Saturdays, December 8 and 22 (drop off by 3 pm) SoMa: Saturday, December 8 (drop off by noon)					 Toy Drive December 1–20 see page 6 for details	1 Fantasy of Lights Union Street HOLIDAY PARTY see page 6 for details
2 Pictures with Santa Cole Valley Pooch Pictures with Santa Rockridge see page 11 for details	3 Hanukkah First Candle 	4 Gingerbread House Workshop North Beach see page 6 for details	5 Gingerbread House Workshop Rockridge see page 6 for details	6 Wreath Workshop Cole Valley see above for details	7 Pier 39 Winter Wine Pour Warm Coat Drive December 7–10 see page 6 for details	8
9	10 Warm Coat Drive December 7–10 see page 6 for details	11 Terrarium Ornament Workshop Cole Valley see page 6 for details Wreath Workshop Downtown & Rockridge see above for details	12 Terrarium Ornament Workshop Russian Hill see page 6 for details Wreath Workshop SoMa see above for details	13 Wreath Workshop Cole Valley see above for details	14 Fillmore Holiday Wine Walk 	15
16	17 Student Monday	18 Teacher Tuesday	19 Wreath Workshop Cole Valley Hardware Happy Hour see right for details	20	21 First Day of Winter 	22
23	24 Christmas Eve 	25 Christmas All Stores Open 10 am–2 pm 	26 Kwanzaa Begins Senior Wednesday	27 Military Thursday	28 First Responder Friday	29
30	31 New Year's Eve 	Lights of Life Collection Through January 15 see page 3 for details	COMMUNITY SAVINGS DAYS Special Community Members SAVE 20% see our website for more details			



Please join us as we celebrate the holidays with 20% storewide savings!* Finish shopping for those last-minute gifts on your list—or get started, if you're more of a procrastinator. Stock up on everything you need at our last Happy Hour of the year, where we'll be serving our Cutting Edge wine, of course. Please stop by. We'll save you a glass of wine!



HAPPY HOUR COUPON

20% OFF STOREWIDE



Valid Wednesday, December 19, 2018, 4:00 pm–closing. Offer applies to regular-price merchandise only. Does not apply to gift cards, postage stamps, Muni passes, Clipper cards, meter cards, Nest products, special orders, recycling fees, or sale merchandise. Not valid with other coupons or offers. One redemption per household. Rewards points do not accumulate.

WHAT'S IN SEASON

DIY Candles

Making candles is a simple do-it-yourself craft that requires just a few supplies. Handcrafted candles make ideal, thoughtful holiday gifts for friends, family, and colleagues. With just a few ingredients, available at all of our stores, you can get started in the candle-making business.

What you'll need:

- Soy wax chips
- Wicks with a tab
- Essential oils or other fragrance oils
- Wooden clothespins
- Jelly jars
- Pouring pot
- Double boiler setup

Steps:

1. Measure an amount of wax chips that's about one and a half times the size of your jar. (For example, if you're using an 8-ounce jar, you will need about 1½ cups of chips.)
2. Secure the wick in the jar with a clothespin on top to hold it straight.
3. Melt the wax in the pouring pot using a double boiler. (Do *not* melt wax in the pouring pot over direct heat.)
4. Pour a small amount of wax in the jar to cover the wick tab.
5. Add about 10% fragrance oil to the rest of your wax and stir for 4 minutes. (That's about ½ ounce of fragrance oil for a 5-ounce jar.)
6. Pour the fragranced wax into the jars.
7. Allow wax to solidify and wait 48 hours before lighting.

The first time you burn your candle, keep it lit for about an hour so that the wax will burn evenly.

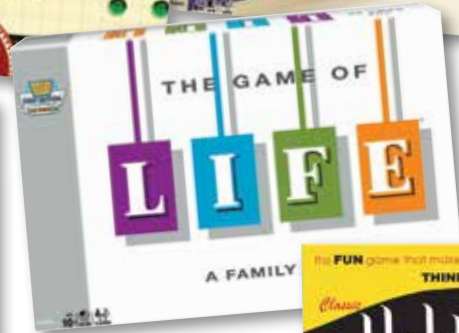
Made with love
just for you!



Light up
someone's life
this holiday
season!

Family Fun: Classic Board Games

Unplug the phones, tablets, video games, and gadgets and gather the family around the dining room table for an evening of good ol' fashioned fun! Many of us spent endless hours in our youth playing board games—and they're just as much fun as you remember. Our stores offer many of the classics: Clue®, The Game of Life®, Boggle®, Yahtzee®, Sorry®, HiHo! Cherry-O, Chutes and Ladders, and Pente®. And we have a selection of other games, too. Prices range from \$4.99 to \$37.99. Assortment may vary by store.



Fresh Holiday Greens

Bring holiday cheer home by decorating with mountain-fresh greenery throughout all your living spaces. In addition to Christmas trees and holiday plants, our stores will have fresh western red cedar garland to bring fragrance and enjoyment during the holiday season. (Sku 770009, \$2.99 per foot) We'll also have an assortment of wreaths, including a mixed wreath: fresh noble fir accented with incense cedar, blue-berried juniper, and ponderosa pine cones (Sku 770006, \$29.99); a eucalyptus wreath: an abundance of seeded eucalyptus with accents of white tallow and deep-red berry clusters (Sku 700344, \$39.99); and a berry Christmas wreath: vibrant red berries accented with blue-berried juniper on a fresh noble fir base (Sku 700535, \$49.99). We'll also offer pine cones in an assortment that includes Jeffrey, sugar, ponderosa, and lodgepole cones for holiday crafts or just to set in a beautiful bowl as a centerpiece or accent piece. (Sku 700183, \$9.99)



Holiday Gift Plants and Trees

Holiday gift plants and trees will be arriving at our stores in November. We will have freshly cut trees as well as live potted trees. Live trees can be replanted in your garden once the holiday season ends or after they grow too big for their containers.

Traditional holiday plants such as poinsettia, cyclamen, and amaryllis make beautiful hostess gifts. Check out the selection in our garden centers.



WHAT'S IN SEASON



Portwest® Hiking and Safety Boots

Our SoMa store carries a line of high-quality work boots that are surprisingly stylish enough to wear off the job with a nice pair of jeans. The **Montana Hiker Boot** features a protective composite toe cap, full-grain nubuck leather, a comfort footbed, and puncture-resistant composite midsole. (Sku 235089, \$95.99) Features of the **Steelite Ohio Safety Boot** include a protective steel toe cap, puncture-resistant steel midsole,

full-grain tumbled brown leather, and a waterproof membrane. (Sku 235110, \$98.99) The rubber outer sole of both boots is slip-, fuel-, and oil-resistant, as well as heat-resistant. Both also offer electric hazard protection and come in men's shoe sizes 8–12.



Boody® Eco Wear

Made from organic, toxin-free bamboo plants, Boody Eco Wear features a naturally luxurious fabric that's silky soft and feels fabulous to wear. Bamboo is sustainable, requires much less water than cotton plants, and is the fastest-growing woody plant in the world. Boody Eco Wear is available in a wide assortment of underwear, bras, camisoles, leggings, socks, tank tops, and T-shirts for women and men. Accredited certifications for organic bamboo farming, as well as compliance that sewn products are produced under lawful, humane, and ethical conditions, is an important part of the Boody production process. Even the box is from recycled materials and printed with vegetable-based ink. This is not the underwear your grandmother used to give you as a gift! Come in and feel for yourself. (\$8.99–\$39.99)



GuideLights

Don't get caught in the dark! Waking up in the middle of the night to use the bathroom (or to get a midnight snack from the fridge) can be dangerous if you need to walk down a dark hallway. Stay safe with SnapPower GuideLights. This nifty night light replaces an ordinary outlet cover and shines three LED lights to keep you from stubbing a toe. It installs in seconds, requires no wires or batteries, and the LEDs last 25-plus years. A light sensor automatically increases or decreases the LEDs depending on the amount of light in the room. LEDs will be at full brightness when the room is completely dark and slowly dim as the room gets lighter. These GuideLights look great on the wall above a kitchen counter. (Sku 333104, \$16.99)



Holiday Craft Supplies

The maker movement has many of us crafting our own gifts and decor for the holidays. You'll find craft sections at each of our stores with oodles of supplies: bells, jewelry wire, glitter glue, craft paints, rhinestones, feathers, pipe cleaners, glitter, colored sand, pebbles and river rocks, mason and jelly jars, moss, wreath forms, glitter spray paints in a wide variety of colors, and much, much more!



FROM THE GARDEN CENTER

Visit our garden centers at the Cole Valley, Russian Hill, North Beach, and Rockridge stores.

In the Garden Garden Tasks

Tips from Our Garden Expert



Stop by our Cole Valley garden center for all your gardening needs. The advice is free from Any, our garden expert. Email any questions: any@colehardware.com.

November:

November's cold signals that it's time to put the garden to bed for the winter. Clear debris that would harbor insect pests over the winter. Plant young, winter-weather-hardy, spring-blooming plants now so that they can establish sturdy roots over the winter.



✓ **Spring bulbs:** Plant tulips and hyacinths, as well as other spring-blooming bulbs such as anemone, crocus, daffodil, Dutch hyacinth, Dutch iris, freesia, leucojum (snowflakes), narcissus, ranunculus, and scilla.

✓ **Hardy vegetables:** In the vegetable garden, plant hardy lettuce varieties such as romaine (Sku 700093, \$3.99); replant every few weeks. Plant cold-tolerant kales (Sku 700968, \$1.69) and cabbages, also root vegetables (carrot, beet, parsnip, turnip, radish), leafy crops (mustard, bok choy, chard, arugula, lettuce, spinach), and legumes (peas and fava beans).

✓ **Fallow garden:** If you're giving the garden a rest, plant alfalfa, buckwheat, fava beans, or field peas to rejuvenate the soil. Come spring, chop them and turn them into the soil as "green manure."

✓ **Frost:** Gardeners in areas with light frosts can spray an antitranspirant on frost-tender trees and shrubs such as citrus trees, kiwi vines, avocado trees, and bougainvillea.

✓ **Rainstorms:** Prepare for winter storms. Dig trenches to divert heavy runoff, add heavy rocks to the base of a raised garden bed to help stabilize it, and/or sow bald spots with wildflower seeds or hardy annual seeds such as sweet alyssum.

December:

In the rainy winter months, our focus turns to decorating and entertaining indoors, but a brisk, sunny winter day can still provide an excellent opportunity to tend to your garden and prepare it for spring.

✓ **Fallen leaves:** Rake up leaves. We offer a variety of rakes. (Sku 74978, \$18.99)



✓ **Pruning:** Now is the time to prune back your roses, fruit trees, and shrubs. This handy prune shear stick will easily handle the job. (Sku 7100373, \$49.99)

✓ **Weed prevention:** Plan ahead if weeding is not your favorite hobby. Corn gluten provides preemergent control of dandelions, crabgrass, and other common weeds. Use around roses, flowers, bulbs, vegetables, trees, shrubs, and on lawns. A 5-pound bag will cover a 300-square-foot area. (Sku 7135239, \$14.99)

✓ **Planting:** Keep your vegetable garden growing with



seeds from our line of Botanical Interests. Fava beans, artichoke, lettuce, and radishes can all be planted now. Don't forget that you can also sow spring and California wildflower mixes. Check out our large selection and keep on planting. You will be rewarded in a few months.

✓ **Frost protection:** Should we get an uncommon frost, be prepared with the Gardeneer® Harvest-Guard® garden cover to protect sensitive plants. The 5' x 25' cover floats over plants to trap heat and does not require stakes. (Sku 7170798, \$14.99)

✓ **Mulch:** More rain on the way can also mean runoff. Placing mulch and bark around plants can help abate this. (Mulch: Sku 75958, \$8.99; Bark: Sku 7094212, \$8.99) Planting on hillsides also aids in preventing soil runoff if we get heavy rains.



✓ **Holiday plants:** Winter annuals such as cyclamen and primrose can really liven up a winter garden, and these plants also look inviting for the holiday season on a porch or lining the stairs.

✓ **Paperwhites:** Don't forget that paperwhites or narcissus bulbs take about four to six weeks to bloom, so start them early. To keep them from getting too tall, give them a little vodka! Seven parts water to one part vodka should do the trick.



✓ **Cut trees:** Keep your cut tree fresh by keeping it well watered. Use Santa® Tree Preserve in the water to help. (Sku 96350, \$4.49) Both live Christmas trees and freshly cut trees can be kept in tiptop condition by applying a little Cloud Cover® to seal in moisture. (Sku 7102965, \$13.99) If there is any left over, it can be used on roses before black spot or rust attack.

✓ **Fresh wreaths:** Prolong the lush green hues of wreaths and garlands by spritzing with water occasionally.

See you in the garden!



Aunt Fannie's Pest Solutions

Each of us is our own microbiome, with gazillions of invisible allies that keep us healthy, safe, and strong. Your home has a microbiome, too. Even "natural" products can disrupt it. Why use toxic products when there are so many kid-friendly, pet-friendly, and earth-friendly products on the market these days? Aunt Fannie's will help keep pests at bay in your home.

Perimeter Pest Powder

- Effective at keeping insects like roaches, ants, fleas, and other creepy crawlies away
- Can be sprinkled along outside perimeter of house and indoors in cracks and crevices
- Made using safe, microbiomic ingredients
- Safe for use near loved ones
- Nonstaining formula
- Commercial-grade power (Sku 750018, \$9.99)



All-Purpose Pest Remedy

- Gets rid of ants, roaches, and spiders
- Nonstaining formula
- Made using safe, microbiomic ingredients
- Commercial-grade power
- Safe for use near loved ones (Sku 750017, \$9.99)



FlyPunch!

- Efficiently eliminates your fruit fly problem
- Most potent for 2 weeks, but will last up to 30 days
- No complicated instructions or setup—just open
- Safe near people and food and does not disrupt your home's microbiome (Sku 750016, \$9.99)

Keep your home safe with Aunt Fannie's



"Our commitment to you: Your satisfaction guaranteed. Period."

COMMUNITY CONNECTIONS

BAY AREA BUSINESSES

Antiques: JEROME'S ANTIQUES in Cole Valley, 90 Parnassus Avenue, is a hidden treasure just around the corner from Cole Hardware. Vintage and antique furniture, silver, crystal, stemware, rugs, lighting, and jewelry are on display just for you! Open Tuesday through Saturday 12:00 pm to 6:00 pm and by appointment. Hope to see you! (415) 592-9800.

Cat Sitters Wanted: Ideal for retirees and seniors in San Francisco. Provide loving, safe care in your home for one or two cats while owner is away. Must have no other pets. Perfect for kitty lovers with feline experience. Jobs vary from one day to four months. Must be reliable, honest, and trustworthy! References required. Please call (415) 333-1123.

Custom Websites and Apps: Need a website or an app? Lost track of your old webmaster and have a site in desperate need of an update? Contact us at info@Bayrocketmedia.com. Local in the Rockridge area of Oakland. In business since 1998.

Driver/Personal Assistant: Serving San Francisco and the Peninsula, Larry will assist you with errands, medical appointments, shopping, light house-keeping, walks or hikes, museums, films, and restaurant or sporting event excursions. Or anything else he can help with! Impeccable references. Flexible, with a two-hour minimum preferred. Call (650) 581-1119, text (415) 793-4099, or email larrymkarp@gmail.com.

Interior Redesign and Feng Shui: Imagine living in a home that you love—a space that supports, nourishes, and inspires you. SpaceTransform creatively reenvisions and rearranges your rooms to be beautiful, functional, and comfortable. To learn more, contact Gwen at (415) 656-7289 or visit spacetransform.com.

Kitty Bed & Breakfast: A very personal pet service (in business 20 years). Offering loving, safe care in a private home with no other pets—only your pet(s) exclusively. No cages/kennels, a vacation home away from home. Ideal for pet owners who want the best personal care for their beloved kitties. Please call Marti at (415) 333-1123 or email msousanis@gmail.com.

Legal Services: Established San Francisco attorney emphasizing Wills and Trusts (including **LIVING TRUSTS** and irrevocable trusts) and representation of small businesses (formation of corporations and limited liability companies; drafting of confidentiality and trade secret agreements, buy-sell agreements; and copyright matters). Reasonable rates (set fees for trusts). Call (415) 221-3000 for appointment. See franklawoffice.com for info.

New Flower Outings: Join your host, Karen, for a round-trip pleasure outing to the San Francisco Flower Mart. A long-time Mart member, explore flowers, plants, and her warmth, wit, and expertise with seniors. A wonderful outing or gift. Two-hour minimum \$60. Phone (415) 260-7540 or email krmkrm2@aol.com.

Orange Dog Manor: Furnished monthly rental. Perfect unit for your local stay, grandparent visits, short-term relocation for remodeling, corporate rentals, executive relocation, tech internships, and all types of UCSF needs. Studio and 1 bedroom apartment; fully furnished including bedding and kitchen; quiet, tree-lined street; private garden; short walk to Cole Valley, UCSF, and Inner Sunset. Orangedogmanor.com, (415) 753-6886, mrbamabear@gmail.com.

Pilates Sessions in Rockridge: Private, duet, and small group classes with Irving S. Wiltshire at Finding Center Pilates, 6214 Florio Street at College Avenue. Very early morning 6 am, midafternoon 2–5, and evening groups 5–7 availability, weekdays Monday to Thursday. Email, text or voice message, (510) 219-8641, iswirving@comcast.net.

Tax Prep and Planning: Tax services for individuals and self-employed persons. Over 20 years experience, especially in dealing with issues of artists, consultants, and nonfilers. Free initial phone consultation. Contact Alan Steger, Enrolled Agent, at (415) 387-3057 or visit StegerTax.com.

Custom website for your unique story



search engine optimized
mobile ready
fast service
good price
local

kvassociates@mac.com
(415) 328.2070

www.kvmediaonline.com

A Photo Book of Your Home



Project Turtle - Making Homes Portable
www.project-turtle.com

Alzheimer's Answers with Amy

Do you have a family member
with Alzheimer's?
Let me help you navigate this journey.
Amy Nachman
(415) 504-6944
stretchmccovey@gmail.com



Pictures with Santa

Sunday, December 2



Muddy at Pt. Isabel
Yosemite camping
Walking the lake
Fetch at Estuary
Hiking in Tilden

Local caregivers who want
to help make great memories.

BROADWAY PET HOSPITAL
4920 BROADWAY OAKLAND CA 94611

OPEN 7 DAYS A WEEK
510.653.0212
BROADWAYPETHOSPITAL.COM

COLE STREET
SIDEWALK CLEANING FUNDRAISER
FEATURING SANTA!

Get your
picture
taken with
SANTA

SUNDAY, DEC. 2ND
11AM - 5PM
at Postal Chase
912 Cole St.

ALL PROCEEDS FINANCE THE
SIDEWALK SWEEPING AND CLEANING

Holiday Hounds: Pooch Pictures with Santa

Sunday, December 2, 2:00 pm–6:00 pm
5533 College Avenue, Rockridge

\$10, with Proceeds Going to the Milo Foundation

Have your pooch's photo taken with Santa Claus. The proceeds will support the Milo Foundation, a nonprofit rescue and adoption center for domestic animals, and you'll receive a 5" x 7" photo keepsake. Please register for photos at colehardware.eventbrite.com so that we have an idea of how many dog treats to have on hand!



McROSKEY
LUXURY BEDS - SAN FRANCISCO 1899

ENJOY LIFE-CHANGING SLEEP

SF SHOWROOM - 1687 MARKET ST. - 415.861.7532
SF FACTORY - 1400 MINNESOTA ST. - 415.874.7520
McROSKEY.COM



Recycle at COLE HARDWARE!

We care about the environment!

Bring to any of our six stores:

BRITA PRODUCTS:

Includes filters, pitchers, bottles, and dispensers.

CELL PHONES:

Personal cell phones—batteries and chargers not required.

BATTERIES:

Rechargeable (NiCad, NiMH) and household (alkaline and carbon).

SPENT FLUORESCENT BULBS:

CFLs, tubes up to 8 feet, U- and D-shaped tubes. Drop-off limit is 10 bulbs.

OLD PAINT:

- Recycle dry, clean, empty metal paint cans through your regular trash pickup. The paint containers you bring to us should have paint in them!
- No handwritten labels can be accepted.
- Be sure that lids are sealed on tight and containers are rust-free and don't leak.
- Please limit your drop-offs to no more than five 1-gallon-size containers (or 20 quart-size containers or a combination of both) at a time. Containers are counted by size, not by the volume of paint they contain.
- Paint must be handed to a crew member.
- Please, no brushes or rags!

PROPANE TANKS:

Small (14 oz. or 16.9 oz.), empty, nonrefillable propane cylinders only. Households only. Limit five per visit.

(San Francisco stores only; cannot be recycled at our Rockridge location.)

SCRAP METAL:

Copper and brass.

EXPIRED PRINTER CARTRIDGES:

Must be in plastic bags to avoid leakage.

MERCURY THERMOSTATS



Benjamin Moore® Paint Available at Cole Hardware!

*Colors that let you create a room that reflects
your sense of style, passion, and flair*

Choose from over 3,300 Benjamin Moore colors.



**Our founder, Dave Karp
Purveyor of Hardware Wisdom**

The Cole Hardware credo...

Commitment to savings:

Rewards program members receive a 3% quarterly dividend on purchases.

Commitment to the community:

We donate 10% of what you spend to local charities (you get to designate one of our Community Partners as beneficiary).

Commitment to you: Over 90 years of guaranteed customer satisfaction.

Commitment to the environment:

We're reducing our footprint by implementing environmentally sound practices in our stores.

SAN FRANCISCO

RUSSIAN HILL

2254 Polk Street

(at Green Street)

8:00 am–8:00 pm

Text or call us at:
(415) 200-3370

COLE VALLEY

956 Cole Street

(at Parnassus Avenue)

8:00 am–8:00 pm

Text or call us at:
(415) 319-6705

DOWNTOWN

70 Fourth Street

(between Market and Mission)

Mon–Sat 8–8; Sun 9–6

Text or call us at:
(415) 200-3444

SOMA

345 Ninth Street

(near Folsom Street)

8:00 am–7:00 pm

Text or call us at:
(415) 200-2154

NORTH BEACH

627 Vallejo Street

(at Columbus Avenue)

8:00 am–8:00 pm

Text or call us at:
(415) 200-2215

OAKLAND

ROCKRIDGE

5533 College Avenue

(a few steps from Rockridge BART)

8:00 am–8:00 pm

Text or call us at:
(510) 230-0145

All Stores Open Thanksgiving Day 9:00 am–3:00 pm • All Stores Open Christmas Day 10:00 am–2:00 pm • All Stores Open New Year's Day 9:00 am–5:30 pm

Cole Hardware reserves the right to limit quantities to stock on hand and to correct printed errors. Items are similar if not identical to printed illustrations. If an item is out of stock, we can offer a suitable replacement or a "rain check" for the advertised item. We strive for complete customer satisfaction.

Contact the **Hardware Hotline** at (415) 432-2665 or email hotline@colehardware.com.



colehardware.com
service@colehardware.com

Holiday 2018
November and December

Email us with any comments or questions at hotline@colehardware.com.

© Cole Hardware 2018. The *Hardware Hotline* is printed on paper with 55% post-consumer product using soy inks by Folger Graphics, Inc., a Green Business printer.