



Big Green Egg
The Ultimate Cooking Experience™

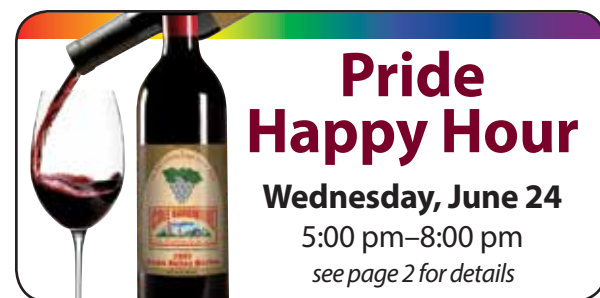
Demonstration
Saturdays, June 6 and 13
see page 6 for details



Men's Suits and Clothing Collection

Saturday and Sunday
June 20 and 21

see page 2 for details



Pride Happy Hour

Wednesday, June 24
5:00 pm–8:00 pm
see page 2 for details

COLE HARDWARE'S Hardware Hotline

June 2015
NEWS AND VIEWS FROM AROUND THE STORES

Ninety-Nine and Feelin' Fine!

As each June approaches, you'll find everyone at COLE HARDWARE busy getting ready for one of our most festive events of the year. Fittingly falling in the same month as Father's Day, we celebrate the birthday of our own founding father, Dave Karp.



Dave with his granddaughter Adrianna

This year, we will really be pulling out all the stops, as Dave rings in his big 9-9! As Dave's granddaughter, I am lucky to have him as the patriarch of my COLE HARDWARE family and my immediate family as well, so this will be a very celebratory month! (My brother David's birthday also falls in June!) This is an amazing milestone in the life of an incredible man.

continued on page 2...



Dave's 99th Birthday Bucket Sale!

Cake! Raffles! Prizes!

Make a 99¢ donation to Children's Miracle Network for a "bottomless" 5-gallon bucket and receive

20% off everything that fits (or not) in the bucket*

100% of your donation will benefit UCSF Benioff Children's Hospital or Oakland Children's Hospital.

Spend \$20 and keep the 5-gallon bucket (while supplies last!)

Saturday, June 6

*Discount does not apply to gift cards, Muni passes, Clipper cards, meter cards, postage stamps, special orders, or sale merchandise. Not valid with coupons or other offers. Rewards points do not accumulate.

Check Out the Weber® Grills in Living Color

This month, as we celebrate a rainbow of lifestyles, we thought it would be fun to highlight the Weber Q1200™ gas grills in an array of festive colors. Since 1952, Weber has been a staple in backyards. Solid, sturdy, and carefully engineered, purchasing a Weber barbecue is an investment that will pay off with years of mouthwatering classics for family milestones: graduations, Father's Days, Fourth of July, and more!

Perfect for a backyard or patio, the Q1200 gas grill is excellent for the griller on the go, too. The small, portable design makes it easy to cook a delicious meal while camping in the Cascades, barbecuing on the beach, or partying at the park. With a generous

189 square inches of cooking space (larger than some San Francisco studio apartments), you'll be able to cook up a feast for everyone!

The new colors assure that you will find something to fit your personality, too! We have them in red, blue, green, fuchsia, purple, and orange. Also

available in black or taupe if you are looking for a more classic, subtle shade. (Skus 8379422, 8394777, 8432585, 8432494, 8432569, 8432536, 8432577, 8432627, \$199.99)



"Our commitment to you: Your satisfaction guaranteed. Period."

Shop online 24/7 at ColeHardware.com.

3312 Mission Street
San Francisco, CA 94110-5009

Residential Customer

PRSR STD
U.S. POSTAGE PAID
SAN FRANCISCO, CA
PERMIT #3137

ECRWSS



Scan to view our website.





Men's Suits and Clothing Collection

Saturday, June 20, and Sunday, June 21

In honor of Father's Day, we will be hosting a suit collection at all of our locations to benefit the St. Anthony Foundation, whose mission is to feed, heal, shelter, clothe, and lift the spirits of those in need and create a society in which all people flourish. Our collection will be open to all clean, gently worn men's clothing, shoes, and accessories, but suits are the most needed.

Bring in a men's suit and receive a **\$5.00**

COLE HARDWARE GIFT CARD

good for your next purchase.

Pride Happy Hour

Wednesday, June 24
5:00 pm–8:00 pm



Here at COLE HARDWARE, we love the diversity of our crew members, so when one associate asked if we could have a Hardware Happy Hour celebrating our LGBT community, we thought it was a grand idea! So please join us on Wednesday, June 24, for a glass of our Cutting Edge wine, some of our gourmet chocolates, and a great deal: \$10 off a purchase of \$20 or more.

To get the \$10-off coupon, simply text "COLE" to 55155 from your smartphone, and the coupon will be delivered right to your phone. You'll be able to show the coupon on your phone to the cashier at check-out. Don't have a smartphone? No worries—just let the store manager know, and he or she will give you a coupon to use.

\$10 Off
a \$20 purchase

Text "COLE" to 55155 for the deal coupon.

Valid Wednesday, June 24, 5:00 pm–8:00 pm only. Coupon does not apply to gift cards, postage stamps, Muni passes, Clipper cards, meter cards, special orders, or sale merchandise. Not valid with other coupons or offers. Must be a member or join our Rewards program. One redemption per household.

Ninety-Nine and Feelin' Fine!

...continued from page 1

Dave first opened his doors for business as COLE HARDWARE in 1961 when he purchased Cole Street Hardware, which had been at its original location since 1920. Previous to that, Dave worked for years at his father-in-law's store: Gilbert Electric and Radio in downtown San Francisco. He learned a lot working for my great-grandfather, but there was one thing about the way he ran his business that my papa could not abide: he didn't feel customers were consistently treated to the friendliest service possible.

With help from two of my great uncles, he was able to pull together the funds to open his own store. Over the door, he hung a sign with the message that remains a motto in our business today: "There are no strangers here, just friends we haven't met." Even now, this friendly attitude is at the root of my papa's interactions with everyone he meets.

At 99 years old, he has recently moved out of his longtime home and into a new home with 24-hour assisted care. Many people expect to meet resistance from senior family members when the topic of

moving into such a facility is broached. In contrast, Dave has embraced the change with impressive flexibility and cheer and will often bring back treats or flowers for the nurses after he goes out. It is a rare thing to have such a naturally pleasant disposition, but at COLE HARDWARE, we strive to keep our dedication to complete customer satisfaction as genuine and heartfelt as it was back when the store was a one-man operation run by Dave.

Right up there with befriending folks from all walks of life, basking in the sunshine, bacon with extra salt, and onions eaten whole like apples, something else that has always been near and dear to Dave's heart is scoring a great deal! The birthday celebrations on Saturday, June 6, at each COLE HARDWARE location will be passing on the opportunity to our customers to do just that. Come enjoy a slice of birthday cake and, if your timing is right, exchange a joke or a card trick with the birthday boy himself!

—Adrianna

MEET THE CREW:



Longtime customers of COLE HARDWARE know that a huge component of what makes our stores great is our staff. Throughout our business, there are thousands of details required to keep the stores running smoothly. Whether a crew member is carrying out an obvious task, such as coaching you through a project, or performing a more "behind the scenes" job, such as organizing merchandise in our backstock areas, we all work with the same end-goal in mind: customer satisfaction. In proud recognition of all the vibrantly different folks who make up the COLE HARDWARE family, we would like to offer you the chance to "Meet the Crew" as we introduce the especially dedicated individuals who work hard each day to make sure that your shopping experience at COLE HARDWARE is a great one.

Meet Maria, the wonderful woman in charge of our housewares and cleaning departments at our downtown Fourth Street location. Maria has been at COLE HARDWARE since 2001, when she had recently relocated to San Francisco from the Philippines. Like so many others of us, she started as a cashier and then worked on the sales floor before eventually

taking on the department head position that she currently has.

While under her leadership, her department downtown has grown from a small offering of very basic items to one with a much more robust selection. If you haven't already checked it out, head downstairs at the downtown store where Maria's meticulously maintained department and perpetual, warm smile will be ready to greet you!

Hardware Hotline: So, you have worked at COLE HARDWARE for almost 14 years now—just a bit longer than you have been in the United States. How did you end up at COLE HARDWARE?

Maria: Soon after I arrived in the United States, I had a job working part time at Ross. I was happy to have it, but at the same time I kept looking for something that I might like better. I saw the job here in the newspaper, so I faxed my résumé and application—no e-mail yet, still fax! Immediately after, somebody called me to come in. And the rest is history!

HH: What kind of work did you do in the Philippines before you left there?

Maria: I was with Bosch [Power Tools] Philippines, and I serviced mostly commercial customers. Most of my customers were Chinese-owned stores. So that was the reason I was excited to see the job posting here at COLE HARDWARE—actually, I had already heard of COLE HARDWARE while living in the Philippines, because I had searched on Yahoo! to see where Bosch was being sold in San Francisco. In those early days, we lived in walking distance to the store, too, so that was very nice.

HH: You have a big, beautiful family. Migrating to another country seems intimidating enough on its own, let alone relocating with so many people. Was it hard at first—do you have any advice for other newcomers?

Maria: Absolutely, it was very difficult in the beginning. My advice would be, first, as soon as you settle, see to it that you immediately find a job. I applied for a Social Security number on July 7, and it came a little later in July. As soon as I received it, I immediately applied to Ross and started working by

continued on page 11...



Sweet Maria posing with her rainbow display of kitchen textiles

Re-COLE-mend: Locksmith, Home Repair, Design + Build, and much more!

Repair Referral Service

COLE HARDWARE'S Repair Referral Service was created to introduce our customers to the finest contractors and tradespeople we know. We have formed alliances with independent businesspeople in order to provide you with the very best in home repair, maintenance, and remodeling. Some jobs may even be performed by qualified members of our staff.

We provide referrals for:

Air Conditioning
Alarms/Security Systems/Access Control
Antique Restoration
Appliance Repair and Installation
Arborist
Architectural Planning
Asbestos Removal
Bath Resurface
Brick and Stone Masonry
Cabinetmaking
Carpentry
Carpet and Linoleum Installation
Carpet Cleaning
Chimney Sweep and Repair
Cleaning/Janitorial
Commercial Kitchen Installation

Computer Data Cabling
Computer Grounding
Computer Repair and Tutoring
Concrete
Custom Closets, Pantries, and Storage Solutions
Decks New/Stain Design + Build
Disaster Cleanup and Restoration (Flood/Fire/Sewage)
Door Refinishing
Drain Cleaning
Drywall/Lath
Duct and Dryer Vent Cleaning
Electrical 24/7*
Emergency Locksmith
Emergency Power Restoration

Faucet Repair and Installation
Fences
Furnace Repair and Installation
Furniture Refinishing and Repair
Furniture Upholstering
Garage Door Repair/Installation
Gardening/Pruning/Tree Trimming
General Contractors
Glass Installation
Grout Restoration
Handyman Services
Hardwood Floors New/Refinish
Home and Office Organizing
Home Energy Rating Systems (HERS)
Home Entertainment Systems

Insulation Installation
Intercom Systems
Interior Design, Staging, and Color Consultation
Interior Wood Refinishing and Restoration
Iron and Metal Works/Gates
Kitchen and Bath Remodeling
Landscaping
Lead Inspection and Abatement
Leak Diagnosis/Waterproofing
Lock Installation
Locksmith Service 24/7*
Mold Remediation
Moving
New Construction
Painting Interior/Exterior

Pest and Termite Control
Plastering
Plumbing 24/7*
Power Washing, Commercial and Residential Cleaning
Remodeling / Major Remodeling
Roofs New/Repair
Room Additions
Security Evaluation/ Consultation
Seismic Upgrading
Sheet Metal Work
Shutter Installation

Skylights
Solar Energy Installation
Stained Glass Creation and Repair
Stair Lift Installation
Stucco Work
Telephone System Installation
Tile Installation
Wallpaper Application
Water Heater Installation
Welding
Window Cleaning/Repair
Windows and Doors

**24/7 available in San Francisco only at this time*



COLE HARDWARE is a licensed California General Contractor, license number 708403.

Contact us at www.colehardware.com/homerepair

Meet Ivo: Our Tile Craftsman from Croatia

Adding new tile to your bathroom or kitchen backsplash can easily transform the room and add value to your home. Both tasteful, simple tile work and intricate, ornate designs can add texture to otherwise flat surfaces. COLE HARDWARE would like you to meet Ivo, one of our licensed and bonded tile contractors. Ivo is a professional in the fabrication and installation of tile and stone. Ivo began learning his craft as a boy, working for his father in the traditional mortar bed method in his home country of Croatia, part of the former Yugoslavia. His father's influence and high standards are evident in the artistic skills that Ivo applies to each project. For over 25 years, Ivo has been providing artistic, expertly executed tile setting services to residential and commercial property owners in San Francisco, the Peninsula, and the entire Bay Area.



Ivo emphasizes that he is a "craftsman" and not just an ordinary tile layer or handyman who might not possess the necessary skills to make a stone or tile installation trouble-free into the future. He feels that the traditional mortar bed method is the very best way to install tile, marble, or granite. This method packs a mortar bed (cement) over a surface before installing the tile. The tile is adhered to the mortar bed while drying or after the mortar bed is cured. The mortar bed may be reinforced with wire. For best results, it is very important to apply this special cleavage wire membrane in between the mortar bed and the substrate. The sheet prevents the mortar bed from bonding to the substrate and allows it to "slip" should there be movement in the substrate from vibration or cracking from a Bay Area earthquake. In a wall application, a metal lath is

mechanically anchored to the substrate, and the mortar locks into the metal lath as it is applied.

Ivo spoke with us about his work with granite, marble, limestone, porcelain tile, and ceramic tile for counters, floors, and walls. Limestone is a younger stone with softer coloration and is less costly to produce. Most of the granite and marble today comes from China, which is surprising since the Roman Empire is famous for its granite structures still standing to this day. Why doesn't the granite in the ruins of Rome look like the kind of granite we see in an updated kitchen? Ivo explains that the granite slabs go through a special polishing process at the factory using water, special machinery, and polishing brushes so that stains do not penetrate the granite. Ivo also believes that granite should be sealed once a year to retain its vibrancy.

Well-chosen tile can add continuity and style to your kitchen, and there are many shapes, designs, and colors to choose from. Tile options range from ceramic, glass, natural stone, and even metal since stainless appliances have gained in popularity. If you like to paint your kitchen frequently to change the look, you might consider a neutral tile that will allow you many future options.

Ivo has extensive experience in retiling showers, another important specialty of his craft. He says the proper mortar bed is very important to a shower.



Some samples of Ivo's quality tile work



The mortar bed levels out the unevenness in the substrate, creates an ideal surface to which the tile can be bonded, and incorporates the correct slope in the tile layer so that the water drains properly. Ivo is also an expert at replacing shower pans, which must be watertight so that mildew does not attack the area below the shower.

We asked Ivo about the many cracks in the old terrazzo stairs in San Francisco. He said cracks in these stairs usually cannot be repaired to their original beauty. One must improvise with cement and a little paint or completely replace them.

If you want to contact Ivo, contact our Repair Referral Service at 415/753-2653 ext. 3 or home_repair@colehardware.com. Ivo can show you his portfolio and help you design your dream kitchen or bath or work with you on any other tiling needs.

WHAT'S UNIQUE

A Delightful Day with Dad

For Father's Day this year, unplug, disconnect for a day, and go old school! You don't need the latest video game or gadget to have fun. These low-tech suggestions are fun for the entire family and will create lasting memories.

Go Fly a Kite!

Kids will go cartoon, cartwheel crazy flying a kite at one of our windy, ideal locales: Ocean Beach, the Marina Green, Crissy Field, or Berkeley's Cesar Chavez Park. We have an assortment of kites in eye-catching colors that will gracefully and acrobatically soar against a Bay Area blue sky. (Skus 937388-90, \$9.99-\$14.99)



Playing Cards

Entertainment disguised as education, Rummy, Blackjack, and Crazy Eights are just a few of the hundreds of card games to enjoy with a simple deck of cards. Or take a page from birthday boy Dave Karp and learn a few magic tricks with a deck of cards. (Sku 937391, \$2.99)



Double-Twelve Dominoes



Play more complicated games or with more players with a set of double-twelve dominoes. (Sku 937275, \$25.99)

Movie Night

Okay, you will need to be minimally plugged in for a movie night, but consider enjoying a classic like *Chitty Chitty Bang Bang* or *Raiders of the Lost Ark*—downright tame by today's action films standards. Dave Karp cautions, "Don't forget the popcorn!" You can forgo the microwave

and oil and use hot air instead for a 30-calorie-per-cup low-fat treat. No mess, no fuss, and virtually no cleanup with a hot air popcorn popper. (Sku 6015036, \$34.99)



Tool Time

Wood shop classes are a thing of the past, unfortunately, but many folks have fond memories of working on projects with their dad in the garage when they were old enough to handle power tools.

Dremel® Rotary Tools

Versatile, powerful, and endlessly useful, Dremel rotary tools are the perfect addition to any toolbox for making repairs around the house or enjoying a favorite hobby. Dremel selection may vary by location. (Sku 2136695, \$89.99)



Wood-Burning Tool

For wood and cork burning, leather tooling, and candle sculpting, a simple wood-burning tool will provide for plenty of creative projects. (Sku 27330, \$19.99)



Game Night

Spend quality time around the dining room table—or take it outdoors on a picnic table—with a fun family game. None of these games requires electricity!

Spot It! San Francisco Limited Edition



Spot landmarks and iconic imagery with this deck of Spot It! cards that requires only a sharp eye and a little bit of speed to play five different games. (Sku 936236, \$13.99)

Soireehome Wine Accessories

For your next soiree (or Tuesday evening movie night), check out Soireehome accessories to make your favorite bottle of wine taste even better.

If you've attended any of our Hardware Happy Hour events, you will recognize the beautiful and simple Soirée wine aerator, as this item has been a longtime COLE HARDWARE favorite. This aerator inserts directly into the top of your wine bottle and aerates the wine as it swirls elegantly around inside the glass globe when you pour it. This makes wine taste better, as oxygen is gently infused into the wine. Be sure to tip the bottle completely upside down, as shown in the image, for maximum aeration. This might feel a little nerve-wracking on your first try—but don't worry, the five-ring gasket will always hold the aerator in place. (We can assure you of this based on lots of experience!) Try the Soirée for yourself or give it as a gift, at a special price this month! (Sku 6209910, **HOT DEAL \$14.99** Regular price \$19.99)

Keep your wine and spirits at optimum temperature from the inside out with Tempour, an in-bottle chiller, filter, and pourer that chills and refines as you pour. Place the stainless steel chilling

rod in the freezer at least 45 minutes prior to use. Or you can use the Tempour without the chiller as a drip-free pourer and filter for sediment or cork. It also includes a stopper to keep out dust and bugs. Imagine the luxury of sitting on a picnic blanket or patio on a balmy day without having to worry about keeping your bottle of rosé deliciously cool and refreshing. It's the little things, people! (Sku 646901, \$34.99)

A deluxe set that includes the Tempour, Soirée, and a vacuum wine preserver will delight the ultimate wine lover! (Sku 646902, \$49.99)



Solutions from Holster Brands®

New to COLE HARDWARE, ingenious Holster Brands products are silicone storage pockets for household items that you like to have within reach. Using them could not be easier—the patented design allows the holster to cling to any smooth surface by eliminating the air between the two surfaces and creating a temporary bond. They are easy to clean and move, so they can be used time after time for all of your cleaning, workshop,



crafting, organizing, and even hairstyling needs! Holster Brands items are resistant to high heat so that curling irons or glue guns can safely be held in place. Once the bond is formed onto a dry surface, holsters can safely be sprayed with water when used in the sink or on a shower wall. Items pictured range from \$11.99-\$19.99.

"Our commitment to you: Your satisfaction guaranteed. Period."

FROM THE GARDEN CENTER

Visit our garden centers at the Cole Street, Polk Street, Mission Street, and Rockridge stores.

In the Garden June Garden Tasks

Tips from Dennis and Bill



Stop by our Cole Street garden center for all your gardening needs. The advice is free from the Garden Guys, Dennis and Bill. E-mail them with any questions: dennis@colehardware.com or blitz@colehardware.com.

San Francisco summers are typically overcast and cool, but the marine layer usually burns off by the afternoon. At this time, we enjoy our longest days of the year—the summer solstice is June 21—allowing you plenty of time to get out and garden! Complete these tasks to keep your garden in tip-top shape for enjoyment through summer, and continue to keep water conservation a top priority.



✓ Plant seedlings of heat-loving vegetables such as melons, tomatoes, cucumbers, peppers, and squashes to be harvested in the fall.

✓ Plant tomato seedlings with plenty of room for growth around them. Growth will be stunted if they're planted too close together. Plant deeper than the pot they came in—all the way up to a few of the lower leaves. After plants are about 3-feet high, remove the leaves from the bottom foot of the stem, as fungus can develop here due to less sun exposure.

✓ Water early in the morning before sunrise or in the evening to minimize evaporation.



Or use a drip irrigation system to conserve water: we carry drip supplies including ready-to-use kits.

✓ Keep on top of weeds—they steal moisture and nutrients you want on hand for your intentionally planted plants!

✓ Conserve moisture and control weeds with mulch. Shredded bark clumps together tightly so that it ends up shedding some water, so it can be placed in areas that won't be watered much. Cover the ground 2 inches deep with your mulch.



will carry on the fight! (Sku 701166, 9.99)

✓ Plant marigolds to repel just about all insects—especially in your vegetable garden.



✓ Pinch off basil buds to promote leafier growth.

✓ Thin tiny fruit (when they're about the size of colossal olives) on trees to 4 inches apart to encourage the trees to bear larger and tastier fruit.

✓ When cutting roses, cut back to a branch with five leaves.

✓ Remove withered blooms from all flowering plants to promote the production of more flowers.



See you in the garden!



Our Water, Our World



Suzanne Bonempo, from Our Water, Our World will be on hand during Dave's 99th Birthday Bucket Sale on Saturday, June 6, at our Polk Street location to answer any questions you might have on earth-friendly gardening practices.



Tick Alert!



Small ticks, the size of a poppy seed, are showing up in vegetation, on wood, and on animals in the Bay Area and throughout California. Seeking a

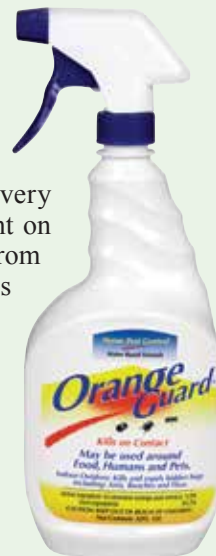
blood meal, they bite both people and animals. If infected with Lyme disease and coinfections, we and our pets can become ill.

Lyme disease is a bacterial infection that causes body-wide inflammation. Initial symptoms may include an expanding rash, flulike symptoms, fatigue, muscle pain, headache, or numbness. If caught early with appropriate antibiotics, Lyme disease can be stopped. Some people have no initial symptoms after a known tick bite, yet go on to develop Lyme disease, so it's a good idea to consult with your doctor for a known bite.

If not recognized, Lyme can become chronic, with body-wide nerve-related and soft-tissue symptoms and alteration of most physiological systems, causing life disruption. Coinfections such as *Babesia*, *Bartonella*, and *Ehrlichia* add

further challenges. All these infections are very expensive and challenging to treat.

Protect yourself and your pets in the first place! It's a very good idea to put tick repellent on yourself and pets. Derived from oranges, Orange Guard fends off bugs the same way the fruit does. Orange Guard is a water-based indoor/outdoor insecticide that may be used around food, humans, and pets. Made from d-limonene (orange peel extract) and inert ingredients, Orange Guard is EPA registered.



We offer a 32-ounce ready-to-use Orange Guard spray. (Sku 7098643, \$14.99) See your vet or pet store for other pet remedies. More info is available at www.lymedisease.org.

Submitted by Lyme patient advocate Robin Krop, affiliated with the California Lyme Disease Association.

Tillandsias: Air Plants

Found in the forests, mountains, and deserts of Central and South America and Mexico, these novel plants need no soil to grow! Members of the bromeliad family that includes Spanish moss, water and nutrients are absorbed through the leaves of tillandsias, also known as air plants.

Caring for tillandsias is simple and makes for a fun project for children and families. Light should be bright but filtered and not direct in the summer months. They do love direct light in the cooler months of November to March. Thoroughly wet your air plants two to three times a week. A garden hose works well, and tillandsias can also be submerged in a bucket of water. Feed your air plants a tablespoon of vitamin B1 per gallon of water.

Tillandsias can even be glued to hard surfaces or driftwood to create a stunning, living centerpiece for your dining room table. Assorted varieties. (\$1.99–\$8.99)



WHAT'S IN SEASON

Big Green Egg® Demonstrations

Rockridge Store
Saturday, June 6
11:00 am–2:00 pm

Polk Street Store
Saturday, June 13
11:00 am–2:00 pm



See the Big Green Egg in action and prepare to get hungry! More than just a barbecue, the Big Green Egg is a complete cooking system that allows you to grill, slow cook, bake, smoke, and roast. Join us as we cook up a variety of tasty treats while demonstrating how easy it is!

Versatility is the name of the game with a Big

Green Egg. Perfectly prepare anything from a steakhouse-style grilled porterhouse to a tender brisket, turkey, or pork tenderloin. Vegetables, stews, stir-fries, casseroles—even pies and desserts—are superbly cooked with an EGG®. Pizza on an EGG is in a class of its own. You can literally cook an entire meal with an EGG!

Swedish Midsummer Festival

A holiday dedicated to eating, drinking, music, dancing, and general merriment, Swedish Midsummer is second in importance only to Christmas in Sweden. It is intended to be celebrated outdoors surrounded by trees, fields, and water. On June 20, why not expand your cultural horizons and do like the Swedes do! Don your Coachella-esque flower garland crown, grab some beers and nubs (Swedish vodka served ice cold), plenty of food, and some friends or family and head to the nearest field, lake, or park. A maypole is also a traditional component, so get started now on your crafting and practicing your traditional maypole dances!

Typical foods during the long day of Midsummer festivities include pickled herring, new potato salad, grilled meats and fishes, and a special cake made with whipped cream and the summer's first strawberries. As the long day of drinking, eating, and dancing comes to a close, young girls and women pick flowers of seven different species on their way home and lay them under their pillows. Legend has it that their future husbands will then



appear to them in their dreams.

For a truly authentic Midsummer experience, attend the celebration at the beautiful mountain property called Sveadal in Morgan Hill. About an hour and a half drive from the Bay Area, this will be Sveadal's 121st annual Midsummer festival, and it is a wonderful event for folks of all ages. For more information, visit sveadal.org.

Swedish Lilja Apron (Sku 698150, \$24.99)

Swedish Lilja Dishtowel (Sku 698160, \$7.99)



Table in a Bag

Summer is fast approaching and with it all of the picnics, campouts, and tailgates of the season. With all of this outdoor fun in mind, we suggest you don't wait another minute before popping in to any COLE HARDWARE



pick up a table in a bag. Lightweight and easy-assemble tables are stored in a bag similar to that of a camp chair when not in use, but snap together and cinch when needed. Weighing just 6 pounds, the table in a bag can easily be kept in the back of your car to have

available for impromptu events. On the other hand, if you are looking for a budget-friendly yet stylish outdoor furnishing option for a small space, these tables are more than attractive enough to leave permanently assembled on a patio or balcony. Available in neutral brown or aluminum, or choose a brightly colored option for a pop of color that says "party," no matter how you use it! (Skus 864102–106, \$49.99)



- Competitive pricing
- Incomparable service
- Specializing in hard-to-find items
- Free Bay Area delivery on most items

415/647-1800 E-mail: colesupply@colehardware.com

Mobile Locksmith Services

24/7 Emergency Services in San Francisco

Master Locksmith with Over 20 Years of Experience

Residential, Commercial, and Automotive Services

Contact us at
415/753-2653 ext. 3
or e-mail
homerepair@colehardware.com

IT'S A GREAT TIME TO PAINT!

Picking a Paint Color

Painting a room is an easy, inexpensive upgrade that do-it-yourselfers can take upon themselves and accomplish over a weekend. Although it is a fun part of a painting project, picking the perfect shade of paint can often prove daunting. Consider the following questions to help you find just the right color.

How is the space used?

If you are painting your bedroom, you might want to choose a calming color such as blue. A study in the United Kingdom by Travelodge found that those who slept in blue bedrooms slept the best and woke up in a happy, positive mood. For a kitchen, you may want to use a cheerful, bright color to get your morning started on an energizing note.

What items are not being replaced?

This includes furniture, carpeting, and drapes, which are larger investments. Unless you plan to replace these items, you'll want to keep these in mind when choosing a color so that it doesn't clash.

What is the lighting like in the room?

A room's natural lighting will change throughout the day as the sun's angle changes. Also the direction of the room's sun exposure will cause a paint color to appear differently. Artificial light will also affect the appearance of a color. Benjamin Moore® recommends when choosing paint colors for a room, it's always wise to look at color swatches in the actual space and under different lighting conditions.

For the best test, buy a paint color sample and paint one or more test areas in your room. Observe how the color looks at different times of the day in natural and artificial light.

Do you have any inspiration for the room?

Pinterest and dwelling magazines are great starting points to get ideas on the overall look you are hoping to achieve in a room. The Benjamin Moore website also showcases a lot of creative inspiration for a room with just a coat of paint. Visit www.benjaminmoore.com for creative encouragement.

What is the traffic like in the room?

A room's traffic pattern will help you narrow down a color choice as well as the finish you select. Benjamin Moore paints offer several different paint sheens so that you can choose the one that is right for you.

Flat is the least reflective finish and provides excellent depth of color. It's a great choice for hiding surface imperfections on walls.

Matte is more reflective than flat and is also great for minimizing surface imperfections, while providing a durable finish.

Eggshell imparts a softly polished glow and provides an easy-to-clean surface. It's perfect for busy areas such as kitchens, dining rooms, and family rooms.

Satin, or pearl, is a medium finish ideal for high-traffic areas like hallways when the full sheen of a semi-gloss is not desired.

Semi-gloss creates a smooth, highly reflective finish that is durable and withstands repeated cleaning. It is used to highlight interior trim, doors, and window frames and is also popular for bathrooms.

Do you have a color in mind?

While you may be drawn to the hottest

color you see on the runways and in fashion magazines, is it a color you can live with? Maybe you adore a beautiful tangerine orange—but an entire room? Start off by painting just one accent wall in a fun color and see how you enjoy it. Every color has many variations. If bright, sunny yellow is too much for you in the kitchen, tone it down a bit to a more subtle shade. And if you really aren't sure about a color, try a few accent pillows, a throw rug, or curtains in your new favorite shade before committing to the shade on your walls.

And don't forget! Paint is never permanent—it's simple to paint over any color experiments gone bad.

So don't be afraid to try a new color. The paint experts at any of our locations will help you choose the right color for your room.



Ceiling Color Can Transform a Room

When it comes to choosing a paint color for your room, start at the top—ceilings need color, too!

Ceilings are often the forgotten fifth wall in a room. Too often, little thought is given to a ceiling's contribution to the overall room design, and it's typically just coated in some ubiquitous white paint.

Look at your ceilings from a new perspective. Color, sheen, pattern, and texture on the ceiling can transform the entire look and feel of a room. So the next time you're ready to refresh the look of a room and don't know where to begin—look up! Following are a few ceiling color tips and ideas to help transform your space.

Warm It Up

A large room with high ceilings can feel impersonal or unbalanced when furnishings, floor coverings, and accessories visually occupy the bottom half of a room, leaving the top bare. In this case, experiment with a ceiling color in a deeper

shade. For example, a rich cocoa in a soft sheen, such as eggshell or pearl, will cozy up and balance a large open space.

Dress It Up

Consider experimenting with glazes on your ceiling, including metallic and pearlescent effects. Benjamin Moore offers a complete line of specialty finishes. Watch videos to learn how-to techniques for glazes.

Specialty plasters can elevate your ceiling to an art form, adding texture, color, and dimension. Look for ideas you can try yourself or explore with your professional specialty finish contractor.

Open It Up

Make a small room or room with a low ceiling feel larger by keeping the color contrast between the walls and ceilings to a minimum. Eyes will gently travel upward without the stark demarcation created by a bright white ceiling (think of how the sky

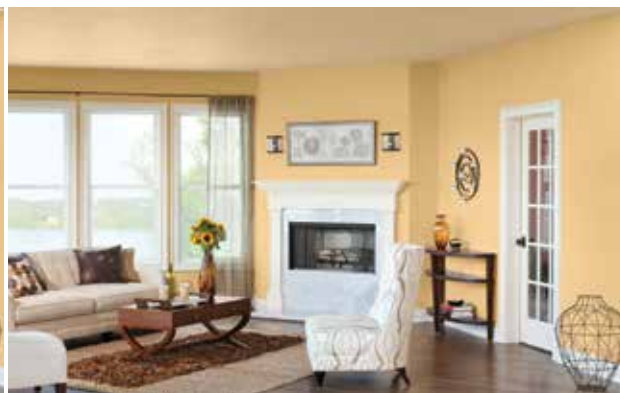
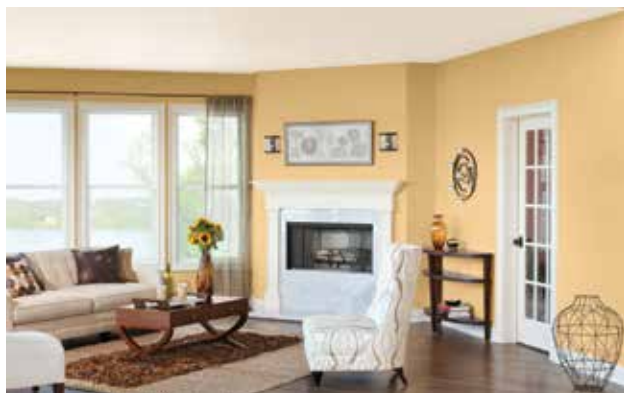
naturally lightens in an ombré effect as it approaches the sun).

For the best effect, choose ceiling colors in a flat sheen. Benjamin Moore Waterborne Ceiling Paint is specially formulated for an ultra-flat finish. It absorbs light and has the lowest reflective quality of any ceiling paint on the market, so it hides imperfections and prevents light from bouncing off in distracting directions, leaving you nothing but pure, beautiful color overhead.

So Don't Forget Your "Fifth Wall"

Ceilings truly are a blank canvas for your creative expression, and as a bonus, you don't have to worry about smudgy fingerprints or furniture nicks. And painting your ceiling is a budget-friendly way to give any room in your home a new, inviting look. With a stunning ceiling to look at, it'll be easy to keep your chin up!

Article from www.benjaminmoore.com



ENVIRONMENTAL INFO



GOOD FOR THE EARTH—WE TAKE ACTION FOR THE ENVIRONMENT!

Drought Tips

By now we all know that the drought we are facing in California is a serious problem. While the Bay Area consumes relatively less water than our fellow Californians in more rural areas, there is no excuse for every single one of us not to do our part. The time to start amending behaviors is now. Here are a few tips to get you started if you haven't already committed to using less water.

- Fix any leaks—immediately. Whether a sink in your bathroom or kitchen is dribbling or you suspect a leak in your toilet, now is the time to address the problem. Leaks like this can waste many gallons of water per day. To test for a leak in your toilet, lift the lid to your tank and drop several drops of food coloring inside. Do not flush while waiting 20 minutes. Then check the water inside the toilet bowl for color. If any appears, come and see us for help—you have a leak.



- Install a shower flow control and adjust it so that you are using less water when you shower. (Sku 40084, \$11.99) While you're at it, challenge yourself to take a shorter shower. If you can decrease your time by just a minute, you can save up to 3 gallons of water.



- Be prepared for rain with a rain bucket to catch and preserve whatever precious rainfall we have. You can attach a garden hose to the fitting and use what you've collected to water your garden instead of needing to turn on the spigot. Collect up to 50 gallons with this model (Sku 7205396, \$99.99)

- If you use a dishwasher, pack it as full as possible each time you run it. Same goes for the washing machine—do only full loads as often as you can.



- Use an immediate hot water dispenser in the kitchen. Instead of running the water and waiting for it to heat up, have hot water on demand as soon as you turn on the faucet. (Available by special order: Sku 47986, \$239.99)



- Or for a more budget-friendly option, simply have a pitcher or dishpan in place to catch water that you are running to heat up. Instead of letting water run down the drain, you can use the clean water you collect to boil for your pasta or to water your houseplants. (Sku 66695, \$7.49)



- Consider installing a Sink Positive™ device. This retrofit for your toilet lid takes just minutes to install and turns your toilet lid into a sink—using the clean water before it



Flush your toilet with the water you already used to wash your hands.

refills your toilet tank to make a touch-free hand wash with every flush. (Sku 400031, \$139.99)



- And finally, if it's yellow, let it mellow. Need we say more? (Please don't make us.)



Recycle at COLE HARDWARE!

Bring to any of our five stores:

BRITA PRODUCTS:

Includes filters, pitchers, bottles, and dispensers.



SMALL CONSUMER ELECTRONICS:

Items up to the size of a desktop computer.



CELL PHONES:

Personal cell phones—batteries and chargers not required.

BATTERIES:

Rechargeable (NiCad, NiMH) and household (alkaline and carbon). (Not available at Rockridge location).



OLD PAINT:

- Recycle dry, clean, empty metal paint cans through your regular trash pickup. The paint containers you bring to us should have paint in them!
- No handwritten labels can be accepted.
- Be sure that lids are SEALED ON TIGHT and containers are rust-free and don't leak.
- Please limit your drop-offs to no more than five 1-gallon-size containers (or 20 quart-size containers or a combination of both) at a time. Containers are counted by size, not by the volume of paint they contain.
- Take paint to the customer service desk.
- PLEASE, no brushes or rags!



PROPANE TANKS:

Small (14 or 16.9 oz.), empty, nonrefillable propane cylinders only. Household only. Limit 5 per visit.



(Not available at Rockridge location).

SCRAP METAL:

Copper and brass.

SPENT FLUORESCENT BULBS:

CFLs, tubes up to 8 feet, U- and D-shaped tubes. Drop-off limit is 10 bulbs.



(Not available at Rockridge location).

EXPIRED PRINTER CARTRIDGES:

Must be in plastic bags to avoid leakage.

SOFT PLASTIC:

Clean plastic only. Households only. One basketball-size amount per visit, please.



For Bay Area recycling resources, visit www.colehardware.com/recycle.htm

Goodwill E-Waste and Donation Drop-Off

3312 Mission Street
Saturday, June 13, 10:00 am–2:00 pm

Our Mission Street store will sponsor a donation drop-off day on Saturday, June 13, from 10:00 am to 2:00 pm with our friends at Goodwill. Besides consumer electronics (working or not), we will accept clothing and accessories, home accessories, kitchenware and small appliances, and bicycles. (Sorry, we cannot accept large appliances, sofas, mattresses, snow skis, auto parts, or furniture.) Goodwill will take almost anything in good, clean, working condition. As a guideline, if you would give it to a friend or hand it down to a relative, it is perfect for Goodwill.

This is a great opportunity to clean house and recycle outdated phones, computers, stereos, and



televisions properly to keep them out of the landfill. Although we accept small consumer electronics at our stores on a daily basis, this is a great opportunity to bring in any larger electronics, such as televisions.

HARDWARE KNOWLEDGE

Tips for Home Safety and Accessibility

Hazards in the home are responsible for about a third of the injuries suffered by older adults, and people with impairments may face difficulties—and barriers to independent living—in their own environments.

It therefore makes sense to observe household habits, identify problem areas, and make changes that will help create safer, more accessible living situations. Since June is Home Safety Month, we've compiled a list of easy fixes to common problems. The products shown are samples of the many from which to choose at COLE HARDWARE.

- Improve lighting, if necessary, both indoors and out, to add safety as well as security. Take special note of stairways, and don't forget closets.
- Night lights or motion-sensor lights should be put in hallways and bathrooms used at night.



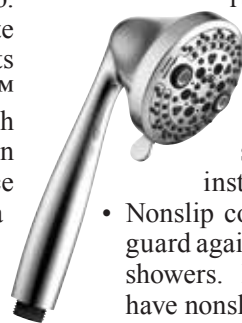
Entryways and stairwells should be well lighted, too. One of our favorite motion sensor lights is the Light It™ wireless LED porch light, which can stand on a surface or be mounted on a

wall. (Sku 3266087, \$31.99)

- Key ring flashlights allow maneuvering through dark parking areas—or even to the bathroom. The Stanley® MiniTripod™ flashlight is small enough for a key ring and features a long-life LED bulb. The tripod also comes in handy when both hands are needed to perform a task. (Sku 5413935, \$10.99)



- Stair safety treads provide stability, and a contrasting color tread at the edge of a step gives a visual cue. COLE HARDWARE has assorted widths, colors, and textures available.
- Handrails should be positioned about adult elbow height on both sides of staircases. Knobs at both ends will alert the user that the stairs end.
- Grab bars should be situated vertically at tops of stairs, and bars or handrails should be placed in bathrooms where needed (towel racks should never be used for support).
- A shower seat and a handheld showerhead will help avoid fatigue and eliminate bending. The Safety First™ nonslip seat has



rustproof legs and fits in standard tubs and showers. (Sku 4017000, \$44.99) The Oxygenics® handheld power massage showerhead has five settings, a 5-foot hose, and a stationary mounting bracket. Easy installation. (Sku 4495750, \$39.99)

- Nonslip coatings or safety mats or strips will guard against slips in tubs and showers. Bath mats should have nonskid backings.
- Limit the use of extension cords and fasten them to baseboards. 3M Cord Clips hold firmly and remove cleanly with no surface damage. Each clip holds 1 pound. Package of four clips and five adhesive strips. (Sku 5095856, \$4.99)



- Relocate items in cupboards and cabinets so that they are low enough to be easily reached.
- Lower closet shelves if necessary.
- A long-handled pick-up tool can be used to reach objects that are on high shelves or on the floor. The Pik Stik pick-up tool has a 32" handle and a 4" jaw opening. It will hold a 3-pound object. (Sku 2114957, \$29.99)
- If a step stool is necessary, a sturdy one with side handles should be used.



- Clear moss and mildew from shady stairs and sidewalks so that areas are not slippery. Water-based Safer® Moss and Algae Killer and Surface Cleaner will do the job—plus it's noncorrosive to metals and will actually beautify wood. (Sku 7115991, \$19.99)
- Hose reels loop hoses out of the way.



Rockridge Recycling: No CFLs, Batteries, or Propane Tanks



Unfortunately our Rockridge location can no longer accept spent CFLs or fluorescent tubes, household batteries, or empty propane tanks. Oakland residents with cart service pickup can recycle spent household batteries by placing them in a sealed, clear plastic bag and setting them on top of their cart on collection day. There is no recycling pickup service for CFLs or fluorescent tubes, but because they contain mercury, these cannot be put in the trash and must be taken to the Oakland hazardous waste facility. Please visit <http://www.acgov.org/aceh/household/> for information on drop-off times.

Watersafe® Test Kits

Water is arguably our most precious resource, even more precious now with our drought situation, and it is by far the most ingested substance on the planet. That's why it's so important for you to know what's getting into your home and filling your glass! Even though we enjoy some of the best drinking water in the world here in the Bay Area, courtesy of Hetch Hetchy Reservoir, many homes and offices built before 1988 may have lead-containing pipes and fixtures still in use.



Lead is toxic when ingested and causes a wide variety of systemic and developmental problems in adults and children, yet this metal can leach from old pipes and fixtures, making its way into drinking water.

In the United States, about a million children under the age of six have an amount of lead in their blood that exceeds the level of concern. Testing your water for dangerous chemicals and impurities is the most important first step in maintaining a happy, healthy, contaminant-free home. Watersafe's unique, do-it-yourself kits make it

easier than ever to get professional results at an affordable price.

Even with modern water-treatment facilities, water can be a significant source of dangerous contaminants, spreading acute and chronic diseases. Continual exposure to certain man-made chemicals can be highly insidious, causing damage over months or years with often serious and sometimes deadly effects. Chlorine, used for disinfection in many commercial and residential facilities, can react with organic matter to form cancer-causing trihalomethanes. Even naturally occurring contaminants can show up in drinking water with deadly consequences.

This simple, affordable one-of-a-kind kit tests for six of the most common and potentially hazardous contaminants found in drinking water (bacteria, lead, pesticides, nitrates, nitrites, and chlorine). It also measures your water's pH and hardness. Sample your water today and watch results appear right before your eyes! (Sku 405405, \$19.99)





COMMUNITY NEWS

Coins for the Community

What a difference a dime makes! Since the inception of our Coins for the Community program launched a few years ago, those little spare change jars on our counters have netted \$26,874.31. Our April collection for Loved Twice, an organization that collects



and distributes new and gently used clothing for infants, totaled \$426.03. May's collection is earmarked for the Homeless Prenatal Program, an award-winning family resource center. We'll report that total next month.

Our June coin collection will be for the St. Anthony Foundation, which is also the beneficiary of our men's suits and clothing collection the weekend of June 20-21. In



the spirit of the City's namesake, St. Francis of Assisi, the mission of the St. Anthony Foundation is to feed, heal, shelter, clothe, and lift the

spirits of those in need and create a society in which all people flourish. They are committed to providing the poor of San Francisco with basic needs and services as a gateway to reclaiming their sense of dignity and progressing toward stability. Services provided include a hot meal dining room, medical clinic, tech lab, clothing program, and social work center.

It's easy to donate to Coins for the Community! Simply drop your spare change in any of the collection jars when you're checking out at any of our stores. Or bring in that old jar of pennies that's collecting dust on your dresser!



Along with other Ace Hardware dealers across the country, we will also be raising money this month for the Children's Miracle Network hospitals in our area (Oakland Children's Hospital and UCSF Benioff Children's Hospital).

During Dave's 99th Birthday Bucket Sale, donate 99¢ to Children's Miracle Network for a "bottomless" bucket—everything you can fit (or not)



Shaena Spoor of W.O.M.A.N., Inc., stopped in to pick up a check from a recent Coins for the Community campaign.

into the bucket is 20% off! Spend \$20 and keep the 5-gallon bucket (while supplies last)! Your 99¢ donation will go directly to the Children's Miracle Network hospitals, and you'll save a bundle! (See page 1 for more details.)



PAWS presents...



Thursday June 11, 2015
6:30-9:30pm

Herbst Pavilion at Fort Mason Center
San Francisco, CA

Tickets: \$185

www.pawssf.org/petchitecture-2015

Proceeds will support PAWS programs that keep people and their pets together.

Learn more at www.pawssf.org

Thank you to this year's sponsors:



The Raider Nation gained a few new citizens when Oakland Raider Rod Streater stopped by our Polk Street store recently and graciously posed with AnaDelia.



Future Rewards member Ryan visited our recent Hardware Happy Hour (he came for the plant project—not the wine) with loyal customer Eric, otherwise known as Ryan's dad.

Shop 24/7 at
ColeHardware.com



Follow COLE HARDWARE!



COMMUNITY CONNECTIONS

BAY AREA BUSINESSES

Accounting/Bookkeeping: We are an accounting firm specializing in accounting systems for small and medium sized businesses with a focus on QuickBooks and online solutions. Services include setup, training, troubleshooting, cleanup, and ongoing bookkeeping for businesses that want to outsource the accounting. Deborah Lardie is a CPA and Certified QuickBooks Consultant. **415/864-0770**, www.lardiecompany.com, deborah@lardiecompany.com

Bed and Breakfast Hosting: If you have an extra bedroom, with or without a private bath, that you would like to rent out on a nightly basis, let us know. Additional income—meet guests from all over the world. Phone: **415/899-0060**, e-mail: reservations@bbsf.com, website: www.bbsf.com. Bed & Breakfast San Francisco—since 1977.

Cat Sitters Wanted: Ideal for retirees and seniors in San Francisco. Provide loving, safe care in your home for one or two cats while owner is away. Must have *no* other pets. Perfect for kitty lovers with feline experience. Jobs vary from one day to four months. Must be reliable, honest, and trustworthy! References required. Please call **415/333-1123**.

Custom Websites and Apps: Need a website or an app? Lost track of your old webmaster and have a site in desperate need of an update? Contact us at info@Bayrocketmedia.com. Local in the Rockridge area of Oakland. In business since 1998.

Driver: Retired gentleman can drive you (in my car) to medical appointments, grocery shopping or on other local errands. I am dependable, very punctual, friendly with a good sense of humor plus a fantastic reference list! I do what taxi drivers don't: wait for you in doctor's waiting room, help you shop (if needed), carry groceries/packages etc. All this for only \$25 an hour (2-hr. minimum). Please call Bill **415/826-3613** or e-mail bill311@att.net. Thanks for reading my ad!

Flower Outings: Join your host, Karen, for a round-trip pleasure outing to the San Francisco Flower Mart. A long-time Mart member, explore flowers, plants, and her warmth, wit, and expertise with seniors. A wonderful outing or gift. Two hour minimum \$90. Phone **415/260-7540** or e-mail krmkrm2@aol.com.

Interior Redesign and Feng Shui: Imagine living in a home that you love—a space that supports, nourishes, and inspires you. SpaceTransform creatively reenvisions and rearranges your rooms to be beautiful, functional, and comfortable. To learn more, contact Gwen at **415/656-7289** or visit www.spacetransform.com.

Legal Services: Established San Francisco attorney emphasizing Wills and Trusts (including **LIVING TRUSTS** and irrevocable trusts) and representation of small businesses (formation of corporations and limited liability companies; drafting of confidentiality and trade secret agreements, buy-sell agreements; and copyright matters). Reasonable rates (set fees for trusts). Call **415/221-3000** for appointment. See www.franklawoffice.com for info.

Proofreading: Lurilla has an English degree, a journalism background and was a member of the International Typographical Union for 40 years. She is an excellent proofreader (editing service also). Reasonable rates—unreasonable pickiness! First page free, then hourly rates apply. References available. Call **415/648-1868**.

Real Estate: \$2,100 REBATE WHEN BUYING OR SELLING YOUR HOME, CONDO, OR INCOME PROPERTY. Representing all neighborhoods of San Francisco and the Peninsula since 1990. I provide a complete service package for both buyers and sellers through Century 21. Why not compare your Realtor services with mine? Call Mike at **415/742-1199** or e-mail Mike.Torres@Century21.com. License #01071794. Rebate given at close of escrow.

Tax Prep and Planning: Tax services for individuals and self-employed persons. Over 20 years experience, especially in dealing with issues of artists, consultants, and nonfilers. Free initial phone consultation. Please contact Alan Steger, Enrolled Agent, at **415/387-3057** or visit www.StegerTax.com.

Wallpaper Installation: Over 30 years experience with all types of wall coverings: anaglypta, inlaid wood veneer, glass beads, metallic, natural fiber, hand-printed, murals, and nonwovens. The latest techniques in full-service, quality preparation, removal, repairs, and installation. For projects large or small, contact Susan through COLE HARDWARE's Repair Referral Service at **415/753-2653 ext. 3** or homerepair@colehardware.com.

Meet the Crew: Maria

...continued from page 2

August. So the advice is to work really hard and work to learn the new system. Everyone in my family works hard and understands that everybody pitches in.

HH: Now that you have been at COLE HARDWARE for a while, what have been the highlights and challenges of your time here?

Maria: I was excited to apply here because I knew about the tools, so I thought it would be an easy place to get accustomed. But the job I was hired for was a cashier. It was so early in my time here that I was still not very used to the money—I would have to think for a moment about the difference between a dime and a nickel! Even in the Philippines, cash handling was not my forte. But I learned, and the staff have always been encouraging and ready to help me. Luckily, I was already comfortable with technology and talking to people—I am good at that!

A favorite time was when I was asked to go with Dave Karp senior and David Karp to be in a photo for a coupon advertisement for COLE HARDWARE. The coupon went on the front of all the phone books in San Francisco, and as soon as it came out, all of my friends were calling and saying, "Is that you? Why are you not smiling?!" They are all used to me laughing and giggling, not so formal. [In the photoshoot for the coupon, Maria was "cast" to look

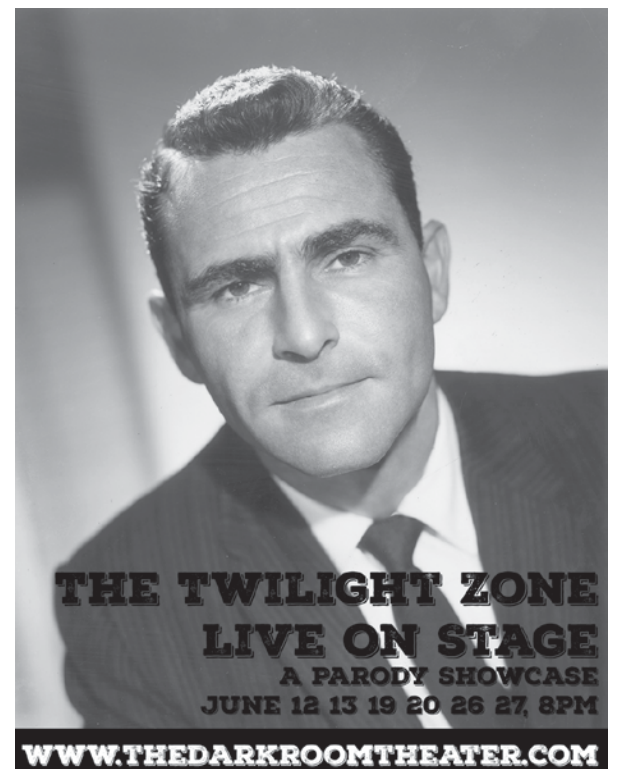


Muddy at Pt. Isabel
Yosemite camping
Walking the lake
Fetch at Estuary
Hiking in Tilden

Local caregivers who want
to help make great memories.

BROADWAY PET HOSPITAL
4920 BROADWAY OAKLAND CA 94611

OPEN 7 DAYS A WEEK
510.653.0212
BROADWAYPETHOSPITAL.COM



**THE TWILIGHT ZONE
LIVE ON STAGE**
A PARODY SHOWCASE
JUNE 12 13 19 20 26 27, 8PM

WWW.THEDARKROOMTHEATER.COM

like a solemn-faced business executive, very different from her usual bubbly demeanor!] So that was something different that always makes me smile to remember. Another thing to mention is that the way we were able to get our house was through the store. Rick Karp brought in a nonprofit organization to meet with any of us who might need help learning about finances and mortgages. So because of the help from that program, we are able to have our home. I was interviewed about that as well, for the news, and lots of my regular customers were coming in to tell me they saw it. So many beautiful things have happened here.

HH: What about when you are not at the store? How do you like to spend your free time?

Maria: Aside from my regular household routines, I have my plants that I grow on the patio outside our house. So I'm happy taking care of those plants—they say that I have a green thumb. I love orchids, and I have one that my mother-in-law gave me almost 10 years ago, and it is still growing and blooming!

HH: Do you have any favorite products at COLE HARDWARE?

Maria: I am very impressed with the great line of Espro French presses. My husband is a coffee lover, and the difference with this product was very surprising!

Benjamin Moore® Paint Available at COLE HARDWARE!



Colors that let you create a room that reflects your sense of style, passion, and flair



Choose from over 3,300 Benjamin Moore colors.

The COLE HARDWARE Calendar - June

SUNDAY	MONDAY	TUESDAY	WEDNESDAY	THURSDAY	FRIDAY	SATURDAY
	1	2	3	4	5	6
	Hardware HOT DEALS June 1-15 see insert			Big Green Egg Demo June 6 and 13 see page 6 for details	Flash Friday DEALS	Dave's Sale! 20% Off see page 1 for details
7 Union Street Festival June 6 and 7	8				Flash Friday DEALS	13 Household Items and E-Waste Collection see page 8 for details
14 Flag Day	15 Haight Ashbury Street Fair Sunday, June 14	16	17	18 North Beach Festival Saturday, June 13, and Sunday, June 14	19 Flash Friday DEALS	20 Men's Suits and Clothing Collection June 20 and 21 see page 2 for details
21 Father's Day First Day of Summer	COMMUNITY SAVINGS DAYS Special Community Members SAVE 20% see our website for more details		24 COMMUNITY SAVINGS DAY Senior Wednesday	25 COMMUNITY SAVINGS DAY Military Thursday	26 Flash Friday DEALS	27
28 Pride Parade	29 COMMUNITY SAVINGS DAY Student Monday	30 COMMUNITY SAVINGS DAY Teacher Tuesday			Flash Friday DEALS To sign up, send an e-mail to hotline@colehardware.com with "Flash" in the subject line.	



Our founder, Dave Karp Purveyor of Hardware Wisdom

The COLE HARDWARE credo...

- Commitment to savings:** Rewards program members receive a 5% quarterly dividend on purchases.
- Commitment to the community:** We donate 10% of what you spend to local charities (you get to designate one of our Community Partner beneficiaries).
- Commitment to you:** Over 90 years of guaranteed customer satisfaction.
- Commitment to the environment:** We're reducing our footprint by implementing environmentally sound practices in our stores.

Five locations serving you every single day of the year!

2254 Polk Street
San Francisco, CA 94109
(at Green Street on Russian Hill)
415/674-8913

3312 Mission Street
San Francisco, CA 94110
(at 29th Street—near Safeway)
415/647-8700

956 Cole Street
San Francisco, CA 94117
(at Parnassus—near U.C. Medical Center)
415/753-2653

70 Fourth Street
San Francisco, CA 94103
(downtown between Market and Mission)
415/777-4400

5533 College Avenue
Rockridge District, Oakland, CA 94618
(a few steps from Rockridge BART)
510/463-2653

All stores open every day 8:00 am–8:00 pm

COLE HARDWARE reserves the right to limit quantities to stock on hand and to correct printed errors. Items are similar if not identical to printed illustrations. If an item is out of stock, we can offer a suitable replacement or a "rain check" for the advertised item. We strive for complete customer satisfaction.

Contact the Hardware Hotline at 415/753-2653 ext. 5 or e-mail hotline@colehardware.com.



www.colehardware.com
Contractor's License #708403
service@colehardware.com

E-mail us with any comments or questions at hotline@colehardware.com.

© COLE HARDWARE 2015. The Hardware Hotline is printed on paper with 55% post-consumer product using soy inks by Folger Graphics, Inc., a Green Business Printer.

June 2015